

April 5th



Eastondale

14TH ANNUAL ON THE FARM BULL SALE

Angus

April 5th, 2021, Wawota, SK, Sale Time 1:30 pm

Eastondale

2021
APRIL 5
2021

SALE TIME 1:30

At the farm, Wawota, SK

Angus

Join us for lunch at 12:00 pm

Pre sale viewing and Eastondale hospitality after the sale

SALE DAY PHONES

Home	306.739.2805
Dale	306.577.7456
Erika	306.577.7457
Shane Castle	306.741.7485
Mark Forsyth	306.784.7844
Nolan Glover	306.575.6955
Devin Warrilow	780.581.4329

SALE STAFF

Auctioneer Ryan Hurlburt	306.292.9812
Ring Staff Kolton McIntosh	204.280.0359
Ring Staff Scott Tibble	204.734.0210
Castlerock Marketing Shane Castle	306.741.7485
Castlerock Marketing Devin Warrilow	780.581.4329
Castlerock Marketing Mark Forsyth	306.784.7844

BULL VIDEOS

www.eastondaleangus.com or www.castlerockmarketing.com

INSURANCE

Shackelton Insurance Brokerage Ltd
Terry Shackelton 306-224-2155

SEMEN INTEREST

Eastondale Angus reserves 1/3 semen interest on all sale bulls.

BULL BOARD

We will keep the bulls free of charge until May 1st. After May 1st at cost.
All bulls staying at Eastondale must be insured.

DIRECTIONS TO THE FARM

10 miles west of Wawota, SK on Highway 48 or 5 miles north of
Kenosee Lake on Highway 9, 1/2 mile east on Highway 48

ACCOMMODATIONS

Kenosee Inn 306.577.2099
(5 mins south of farm)



TO BID ONLINE

Please follow these steps to register to bid online:

- 1) To Bid Online visit www.livestockplus.ca. A sale listing can be seen on the home page.
- 2) Click the Register to Bid Online Button to the right of the sale you are choosing to bid on.
- 3) We converted over to a brand new system at the end of November 2018 to make the bidding experience more enjoyable. Therefore, your old account will not work. You will need to create a new account. Once created a link will be sent to confirm the account and you will receive a username to be used with the password you have created.
- 4) If you have already created a new account then proceed to the Logging into the Auction with your username and password.

It's very simple, if you have any problems please contact: 306-631-9254

EASTONDALE ANGUS

Dale, Shelly and Erika Easton, Box 410,
Wawota, SK, S0G 5A0
Tel: 306.739.2805, Cell: 306.577.7456
Email: eastondale.angus@sasktel.net, www.eastondaleangus.com



Find us on facebook

CASTLEROCK MARKETING

Shane & Tammy Castle
306.741.7485
Mark Forsyth 306.784.7844
Devin Warrilow 780. 581. 4329
www.castlerockmarketing.com





We would like to invite you to look through this bull sale catalog and study the bulls we have bred, raised, screened, and sifted through for you to find a bull that you may want to use on your cow herd.

We are not consumed in producing the heaviest bulls in the country or the bulls that have the greatest carcass numbers in the country as we believe Angus cattle as a breed have desirable carcass qualities that can benefit the beef industry. We do try to produce a product that will cover as many bases as possible that in turn help our customers stay profitable and ultimately stay in the beef business.

We certainly are more of a maternal thinking operation and value a long living mother cow that produces year after year with very little trouble doing her job over those years this includes udders, feet, and temperament. As I have looked through the offering, I am happy to see a great number of bulls with mothers of 10, 11, and 12 years of age. I am also happy with the percentage of bulls that our first calf heifers have put into the sale group this year.

We invite you not only sale day to come to our event but come any day up until the sale. We want to be able to spend the time with you to help you shortlist the bulls that will be possibly helping you meet and achieve your goals. We stand behind the bulls we sell and if you have any issues please let us know. We have broad shoulders and want to be able to understand the problem and how we can fix the problem. All bulls will have a semen evaluation done and will be available for viewing a few days before the sale.

The bulls are fed a TMR ration designed and made for a 3lb a day gain. They are not crept fed at any time during the summer and we try to wean around the last week of September to the first week of October. We feel the bulls have never been hurt due to overfeeding, but one can fairly judge their genetic capabilities.

The bulls will have a leptin test result available upon request. We also will transfer the registration paper to you so you can validate those Angus sire calves with an Angus green tag. Believe me those Angus sire calves that can be validated Angus are being sought after by branded beef programs.

Feel free to call myself or Nolan to discuss any bull in the offering. Please look up the bull videos on our website as we think they describe the bulls very well if you take the time. Lastly thank you to our loyal repeat customer base who have bought bulls from us for numerous years. Thanks to the customers who bought bulls from us for the first time last year and thank you to the people reading this that have never bought bulls from us before as we hope we can do business with you sometime in the future.

See you down the road!

*Dale, Shelly & Erika
Herdsman, Nolan Glover*

CRM A WORD FROM CASTLEROCK

The Eastondale Angus Bull sale comes highly anticipated by locals around Wawota and the Moose Mountains, and for good reason too! The bull sale at Easton's signifies that winter has been beat, spring has arrived and a new set of calves are hitting the ground always adds optimism. Bull tours commence at the farm with some fellowship and a few laughs to be had with new and old friends. Just as we can count on spring coming people have learned to count on a high quality pen of bulls at Eastondale. The bulls are developed responsibly and customer satisfaction ranks high in the ability for these bulls to carry out their breeding season! As you will note in the catalogue there is a large repeat customer base that returns every spring to enhance their genetics from the Easton family. A

highly maternal base of cows was on display last summer at the Angus tour with many commenting on the quality of the females that reside at Eastondale. This feat doesn't happen fast as it's been a work in progress for over 70 years.

We invite you to stop in and view the operation anytime at your leisure, Dale or Nolan would be glad to tour you through the pens. If you have any questions feel welcome to contact any of us at Castlerock Marketing as we are very familiar with the herd and the overall operation.

See you sale day!

Shane Castle

**View
VIDEOS
of the bulls
ONLINE**

www.castlerockmarketing.com



Performance
Balanced Traits
Calving Ease
Genetic Integrity
Maternal Strength

**THIS ALL ADDS UP TO
CUSTOMER PROFITABILITY**



We are proud to support the
**Canadian Angus Foundation
15 for 50 Program**

With **YOUR** help we will continue to further the Foundation's mission and the breed.

15%
of a lot
means
a lot...

In 2019 over \$80,000 was **INVESTED** in member education, awards, bursaries and youth scholarships.

\$180,000 invested in **ANGUS** research over the last three years leveraged an additional \$360,000 in grant funding.

\$60,000+ has been invested in history and archives, including the 2019 Canadian Angus history book.

If you are interested in giving back or learning more about this new initiative, please contact Belinda Wagner, Canadian Angus Foundation Executive Director at 306-757-6133 or email bwagner@cdnangus.ca. You can also visit the Canadian Angus Foundation website at www.cdnangus.ca/foundation/.



The Canadian Angus Foundation functions to preserve and expand the Angus breed for future generations through education, youth development, scientific and market research, and historical preservation and restoration. The Canadian Angus Foundation was incorporated in 1993 and is the charitable arm of the Canadian Angus Association. Donations are tax deductible.



Lot 1

- This bull appears to have an extra ribs length to him
- As people tour the pen, they certainly rank him high on their lists
- Dam is a 12-year-old cow who was designated Elite in the Canadian herd book and had a daughter we sold to Crescent Creek go to Elite dam status
- A maternal sister is working in the LCL herd in Coronation, AB

1 EASTONDALE FUNDAMENTAL 90'20

MUSGRAVE FOUNDATION
BORDER BUTTE FUNDAMENTAL 105B
BORDER BUTTE EVE 60W

DRYLAND ICEBERG 231
EASTONDALE ANNIE K 22'08
EASTONDALE ANNIE K 15'00

KESSLERS FRONTMAN R001
MCATL BLACKCAP JUARA 29-434
WOODHILL COMMANDER 143L-132N
BORDER BUTTE EVE 202N

CAR ICEBERG 056
GDAR FOREVER LADY 9136
KRUGERRAND MONTERO OF TWO M6G
LADY ANNIE OF TWO M 48E

MALE / REG# 2161280 / VK 90H / FEBRUARY 20 2020

Act BW	Adj 205	Adj 365	EPD BW	EPD WW	EPD YW	EPD Milk	EPD CE
88	785	1376	0.5	52	88	23	7

2 EASTONDALE FUNDAMENTAL 97'20

MUSGRAVE FOUNDATION
BORDER BUTTE FUNDAMENTAL 105B
BORDER BUTTE EVE 60W

CROWFOOT EQUATION 5793R
EASTONDALE MAGNOLIA 91'15
BAR-E-L MAGNOLIA 15T

KESSLERS FRONTMAN R001
MCATL BLACKCAP JUARA 29-434
WOODHILL COMMANDER 143L-132N
BORDER BUTTE EVE 202N

O C C LEGACY 839L
CROWFOOT FORKS 755K
S A V 004 DENSITY 4336
BAR-E-L MAGNOLIA 184R

MALE / REG# 2161285 / VK 97H / FEBRUARY 22 2020

Act BW	Adj 205	Adj 365	EPD BW	EPD WW	EPD YW	EPD Milk	EPD CE
83	770	1316	0.5	53	88	27	7



Lot 2

- Sale feature
- This pedigree is really desirable with a number of high-quality females in it
- 97'20 has been a standout all his life and is definitely herd bull material
- A calf that could be used on heifers as well as cows
- We are retaining 100 straws of semen for in herd use

Dam of Lot 2



Lot 3

3

EASTONDALE FUNDAMENTAL 122'20

MUSGRAVE FOUNDATION
BORDER BUTTE FUNDAMENTAL 105B
BORDER BUTTE EVE 60W

KESSLERS FRONTMAN R001
MCATL BLACKCAP JUARA 29-434
WOODHILL COMMANDER 143L-132N
BORDER BUTTE EVE 202N

SANKEYS LARAMIE 114
EASTONDALE COUNTESS 120'16
EASTONDALE COUNTESS 90'09

SANKEYS LAZER 609 OF 6N
LAFLINS GEORGINA OF 6N 614
B HILLS FRL DURATION 606
EASTONDALE COUNTESS 45'06

MALE / REG# VK 122H / VK 122H / FEBRUARY 25 2020

Act BW	Adj 205	Adj 365	EPD BW	EPD WW	EPD YW	EPD Milk	EPD CE
81	689	1214	0.4	45	75	23	5

- I really like this smooth moderate and hairy herd bull prospect
- He probably could be used on heifers with some supervision
- This bulls granddam continues to work here at the age of 12

4

EASTONDALE HERDBOOK 01'20

PEAK DOT HERDBOOK 151C
PEAK DOT HERDBOOK 301F
MIA OF PEAK DOT 373T

BUSHES EASY DECISION 98
BARDOLIA OF PEAK DOT 639X
S A V 004 PREDOMINANT 4438
MIA OF PEAK DOT 339J

PEAK DOT TOUR OF DUTY 20C
JS ERICA 818F
JS ERICA 507C

R B TOUR OF DUTY 177
PEAK DOT MIA 4A
KR BULLSEYE 3451
JS ERICA 119

MALE / REG# VK 1H / VK 1H / JANUARY 20 2020

Act BW	Adj 205	Adj 365	EPD BW	EPD WW	EPD YW	EPD Milk	EPD CE
73	707	1173	-0.2	60	101	26	7

- Result of an in-dam purchase
- Excellent heifer bull candidate
- Dam has extremely good udder quality



Lot 5

5

EASTONDALE FUNDAMENTAL 88'20

MUSGRAVE FOUNDATION
BORDER BUTTE FUNDAMENTAL 105B
BORDER BUTTE EVE 60W

GDAR GAME DAY 449
AW PAULINE 24A
AWH PAULINE 9U*

KESSLERS FRONTMAN R001
MCATL BLACKCAP JUARA 29-434
WOODHILL COMMANDER 143L-132N
BORDER BUTTE EVE 202N

BOYD NEW DAY 8005
G D A R MISS WIX 474
CRESCENT CREEK CHIEF 40P
AWH PAULINE 21P

MALE / REG# 2161279 / VK 88H / FEBRUARY 20 2020

Act BW	Adj 205	Adj 365	EPD BW	EPD WW	EPD YW	EPD Milk	EPD CE
84	748	1277	0.7	53	92	23	6

- Cannot say enough good things about the Border Butte Fundamental sired cattle
- Very desirable phenotype on both the male and female calf crops
- Excellent low birth to high weaning numbers in this bull



Lot 6

6

EASTONDALE OUTSIDE 101'20

HA OUTSIDE 3008
HA OUTSIDE 5307
HA BLACKCAP LADY 6620

MJLC BOOMER 19Y
WWF BOOMER BARBARA 189C
WWF BISMARCK BARBARA 18W

KG SOLUTION 0018
HA EVER LADY 1575
SITZ NEW DESIGN 349M
HA BLACKCAP LADY 3833

GEIS BALOO 13'08
MJLC CATHERINE 70M
S A V BISMARCK 5682
WWF RIGHT TIME BARBARA 42T

MALE / REG# 2191007 / VK 101H / FEBRUARY 22 2020

Act BW	Adj 205	Adj 365	EPD BW	EPD WW	EPD YW	EPD Milk	EPD CE
83	790	1295	0.9	45	89	32	8.5

- Really nice in dam purchase from the Windy Willows mature cow herd dispersal
- Lots of depth and thickness with lighter birth weight
- Dam has a very desirable udder



Lot 7

7

EASTONDALE JACKSON 34'20

EASTONDALE JACKSON 63'15
BEAR CREEK JACKSON 74E
BEAR CREEK 66S BLACKCAP 74A

BAR DOUBLE M THUNDER 14C
EASTONDALE MISS ESSENCE 59'17
EASTONDALE MISS ESSENCE 144'14

CUDLOBE JACKSON 34Z
EASTONDALE TOPSY 19'08
SSA 4336 DENSITY 26T
OTA BOYD NEW DAY 66S

BAR DOUBLE M THUNDER 67A
BAR DOUBLE M ANNABELLA 38Z
BAD LANDS INITIATIVE 375X
EASTONDALE MISS ESSENCE 26'11

MALE / REG# 2189576 / VK 34H / FEBRUARY 12 2020

Act BW	Adj 205	Adj 365	EPD BW	EPD WW	EPD YW	EPD Milk	EPD CE
74	723	1272	0.5	57	100	17	7

- Good, long bodied bull that could be used on heifers
- Dam is out of an excellent cow family here



Granddam of Lot 7



Lot 8

8

EASTONDALE JACKSON 106'20

EASTONDALE JACKSON 63'15
BEAR CREEK JACKSON 74E
BEAR CREEK 66S BLACKCAP 74A

CUDLOBE JACKSON 34Z
EASTONDALE TOPSY 19'08
SSA 4336 DENSITY 26T
OTA BOYD NEW DAY 66S

NF EVEREADY AS2
EASTONDALE CASSIE 63'16
EASTONDALE CASSIE 52'09

IDEAL 4636 OF 452 6187
SHANES SHILO 52
MINBURN MAIN EVENT 38T
G B T CASSIE 2J

MALE / REG# VK 106H / VK 106H / FEBRUARY 23 2020

Act BW	Adj 205	Adj 365	EPD BW	EPD WW	EPD YW	EPD Milk	EPD CE
84	805	1306	1.5	61	104	17	5

- Probably the most identifiable bull in our offering
- He is a real stud bull, thick and square standing on all corners
- Again out of the beautiful uddered Cassie cow family
- Do not pass over this bull

9

EASTONDALE JACKSON 63'20

EASTONDALE JACKSON 63'15
BEAR CREEK JACKSON 74E
BEAR CREEK 66S BLACKCAP 74A

CUDLOBE JACKSON 34Z
EASTONDALE TOPSY 19'08
SSA 4336 DENSITY 26T
OTA BOYD NEW DAY 66S

A A R TEN X 7008 S A
CUDLOBE ENCHANTRESS 58D
CUDLOBE ENCHANTRESS 47H

MYTTY IN FOCUS
A A R LADY KELTON 5551
PUKETUTU ROBIN 933
STEVENSON ENCHANTRESS 425F

MALE / REG# VK 63H / VK 63H / FEBRUARY 16 2020

Act BW	Adj 205	Adj 365	EPD BW	EPD WW	EPD YW	EPD Milk	EPD CE
86	735	1266	1.9	56	102	14	6

- Bigger framed bull with lots of performance
- His dam is moderate and maturing into a very nice cow



Lot 10

10

EASTONDALE JACKSON 91'20

EASTONDALE JACKSON 63'15
BEAR CREEK JACKSON 74E
BEAR CREEK 66S BLACKCAP 74A

CUDLOBE JACKSON 34Z
EASTONDALE TOPSY 19'08
SSA 4336 DENSITY 26T
OTA BOYD NEW DAY 66S

EASTONDALE DURATION 79'09
EASTONDALE DIANE 117'15
EASTONDALE DIANE 117'13

B HILLS FRL DURATION 606
EASTONDALE MAYFLOWER 27'05
FCF WINDFALL 112Y DDC
WRIGHTS 204 DIANE 2Y

MALE / REG# VKE 91H / VKE 91H / FEBRUARY 20 2020

Act BW	Adj 205	Adj 365	EPD BW	EPD WW	EPD YW	EPD Milk	EPD CE
80	669	1218	0.1	47	85	14	9

- Thick topped and deep sided describes this calf
- Pretty easy to be found in the pen

Thank You

TO ALL OUR 2020 BUYERS

Fred and Violet Lansdall*
G.C. Farms
Ferch Farms*
Swan Hills Ranch*
Grafton Farms*
Singbeil Angus*
Daryl & Nicola Erickson*
Tom Harrison*
Bob & Lois Brickley*
Tim Winters*
Karl Johnston*
Excellerator Genetics*
Warner Family Farm Ltd*
Kembar Angus*
Chris MacPherson*
J & S Angus*
Spring Lake Farming Co. Ltd
Brookside Angus
Springview Ranch Ltd*
T-T Ranch
Jayson King

Taylor Ranching*
Edward Brown*
Brown Acres Ltd*
Bill MacPherson*
Allday Enterprises Inc*
Clint Winters*
Forsyth Ranch*
Bourhis Ranch Ltd*
Carman Erickson*
Glendale Ranch Ltd
Thomas McDonald
Cross X Ranch Inc*
Autumn Dew Land & Cattle*
20/20 Angus
LCL Angus*
Donfield Farms Ltd*
Brent & Emma Metz
Windy Willows Farms*
C & I Properties Inc
Henry Stewart
KS Cattle Co

Easton Carfantan
Kary Family Farm
Ethan Gaboury
Dusty Rose Cattle Co
Nesset Lake Angus*
Steven & Chelynn Brown*
Jan Welink
Grace Glover
Trent Selte
Dale & Janet Metz*
Tiny Angus Ranch
Triple L Ranch*
Poplar Meadows Angus
Pedersen Livestock
Tom Madsen
Harvest Angus
Colton Thomas
Scott Lamb
Clarence & Charollette Hookenson*
Westview Farms*
**denotes repeat buyer*

11 EASTONDALE JACKSON 96'20

EASTONDALE JACKSON 63'15
BEAR CREEK JACKSON 74E
BEAR CREEK 66S BLACKCAP 74A

SANKEYS LARAMIE 114
EASTONDALE LUCY 37'15
EASTONDALE LUCY 107'09

CUDLOBE JACKSON 34Z
EASTONDALE TOPSY 19'08
SSA 4336 DENSITY 26T
OTA BOYD NEW DAY 66S
SANKEYS LAZER 609 OF 6N
LAFLINS GEORGINA OF 6N 614
MINBURN MAIN EVENT 38T
EASTONDALE LUCY 50'05

MALE / REG# 2161284 / VK 96H / FEBRUARY 21 2020

Act BW	Adj 205	Adj 365	EPD BW	EPD WW	EPD YW	EPD Milk	EPD CE
86	779	1246	1.3	50	84	16	5

- Another good performing Jackson 74E son
- Jackson 74E was the high selling bull we purchased from Bear Creek Angus at Maple Creek for \$16,000
- Note just shy of an 800lb adjusted weaning weight



Lot 11

12 EASTONDALE JACKSON 153'20

EASTONDALE JACKSON 63'15
BEAR CREEK JACKSON 74E
BEAR CREEK 66S BLACKCAP 74A

BEAR CREEK T.D. 796A
EASTONDALE FOREVER LADY 97'16
EASTONDALE FOREVER LADY 29'12

CUDLOBE JACKSON 34Z
EASTONDALE TOPSY 19'08
SSA 4336 DENSITY 26T
OTA BOYD NEW DAY 66S
SSA 4336 DENSITY 26T
LLB LASSIE 796W
DRYLAND MAX 533
EASTONDALE FOREVER LADY 13'09

MALE / REG# 2157506 / VKE 153H / MARCH 05 2020

Act BW	Adj 205	Adj 365	EPD BW	EPD WW	EPD YW	EPD Milk	EPD CE
90	796	1243	2.2	59	106	19	4

- A bull that is sure to add pounds and scale to your calf crop
- A maternal brother was the high selling bull in our 2019 sale to LCL Angus of Coronation and his sons now highlight their bull sale



Maternal brother
of Lot 12



Lot 12

13 EASTONDALE JACKSON 149'20

EASTONDALE JACKSON 63'15
BEAR CREEK JACKSON 74E
BEAR CREEK 66S BLACKCAP 74A

JINDRA DOUBLE VISION
2J DAISY 1E
2J DAISY 27X

CUDLOBE JACKSON 34Z
EASTONDALE TOPSY 19'08
SSA 4336 DENSITY 26T
OTA BOYD NEW DAY 66S
CONNEALY REFLECTION
HOFF RACHEL 8312 405
SITZ UPWARD 307R
2J DAISY 28P

MALE / REG# 2191979 / VK 149H / MARCH 4 2020

Act BW	Adj 205	Adj 365	EPD BW	EPD WW	EPD YW	EPD Milk	EPD CE
82	784	1352	1.8	61	111	21	4.0

- Bigger framed Jackson son
- Out of a cow we obtained from 2J Angus



Lot 13



Lot 14

- Definite sale feature
- A great maternal pedigree with the sire of this bull's dam being a high selling bull in a past sale to Fred Lansdall
- Really hard to find a hole in this bull as he does a lot of desirable things very well

14 EASTONDALE TRIBUTE 52'20

MC CUMBER TREMENDOUS 2008
MC CUMBER TRIBUTE 702
LASSIE 113 OF MC CUMBER

EASTONDALE DURATION 79'09
EASTONDALE SUSAN 124'15
EASTONDALE SUSAN 40'13

O C C EMBLAZON 854E
O C C DIXIE ERICA 960H
O C C MISSING LINK 830M
LASSIE 935 OF MC CUMBER

B HILLS FRL DURATION 606
EASTONDALE MAYFLOWER 27'05
KA BLACK CEDAR 290
EASTONDALE SUSAN 62'00

MALE / REG# 2161259 / VK 52H / FEBRUARY 15 2020

Act BW	Adj 205	Adj 365	EPD BW	EPD WW	EPD YW	EPD Milk	EPD CE
90	786	1389	0.8	55	99	32	7

15 EASTONDALE TRIBUTE 68'20

MC CUMBER TREMENDOUS 2008
MC CUMBER TRIBUTE 702
LASSIE 113 OF MC CUMBER

HF REFLECTION 241C
EASTONDALE MAYFLOWER 138'18
EASTONDALE MAYFLOWER 152'14

O C C TREMENDOUS 619T
MISS WIX 2022 HC MC CUMBER
O C C MISSING LINK 830M
LASSIE 935 OF MC CUMBER

LLB REFLECTION 607A
HF TIBBIE 77Z
BAD LANDS INITIATIVE 375X
EASTONDALE MAYFLOWER 27'05

MALE / REG# PENDING / VK 68H / FEBRUARY 16 2020

Act BW	Adj 205	Adj 365	EPD BW	EPD WW	EPD YW	EPD Milk	EPD CE
80	677						



Lot 15

- Heifer bull approved
- Extremely thick, moderate, and masculine made really describes 68H well
- Tribute puts a stamp on all his sons

16 EASTONDALE TRIBUTE 32'20

MC CUMBER TREMENDOUS 2008
MC CUMBER TRIBUTE 702
 LASSIE 113 OF MC CUMBER

BAR DOUBLE M THUNDER 14C
EASTONDALE CASSIE 110'18
 EASTONDALE CASSIE 131'08

O C C EMBLAZON 854E
 O C C DIXIE ERICA 960H
 O C C MISSING LINK 830M
 LASSIE 935 OF MC CUMBER

BAR DOUBLE M THUNDER 67A
 BAR DOUBLE M ANNABELLA 38Z
 B HILLS FRL DURATION 606
 G B T CASSIE 2J

MALE / REG# 2158117 / VK 32H / FEBRUARY 11 2020

Act BW	Adj 205	Adj 365	EPD BW	EPD WW	EPD YW	EPD Milk	EPD CE
74	698	1247	0.1	53	95	25	8

- Sure fire calving ease in this masculine bull
- A very nice Cassie female is his dam



Lot 16

17 EASTONDALE TRIBUTE 46'20

MC CUMBER TREMENDOUS 2008
MC CUMBER TRIBUTE 702
 LASSIE 113 OF MC CUMBER

MINBURN ACTIVE DUTY 72C
EASTONDALE MEERA 55'18
 WARD'S C MEERA 28C

O C C EMBLAZON 854E
 O C C DIXIE ERICA 960H
 O C C MISSING LINK 830M
 LASSIE 935 OF MC CUMBER

R B ACTIVE DUTY 0010X
 MINBURN BLACKBIRD 130Y
 MOHNEN SOUTH DAKOTA 402
 C WARD'S MEERA 7Z

MALE / REG# 2161257 / VK 46H / FEBRUARY 14 2020

Act BW	Adj 205	Adj 365	EPD BW	EPD WW	EPD YW	EPD Milk	EPD CE
81	673	1148	1.8	49	93	24	6

- Another real nice heifer bull candidate
- Dam is a moderate female with superior udder quality



Lot 17

18 EASTONDALE TRIBUTE 06'20

MC CUMBER TREMENDOUS 2008
MC CUMBER TRIBUTE 702
 LASSIE 113 OF MC CUMBER

BAR DOUBLE M THUNDER 14C
EASTONDALE BLACKBIRD 92'18
 EASTONDALE BLACKBIRD 121'12

O C C EMBLAZON 854E
 O C C DIXIE ERICA 960H
 O C C MISSING LINK 830M
 LASSIE 935 OF MC CUMBER

BAR DOUBLE M THUNDER 67A
 BAR DOUBLE M ANNABELLA 38Z
 BAD LANDS INITIATIVE 375X
 BEVERLY HILLS BLACKBIRD 401

MALE / REG# 2157638 / VK 6H / JANUARY 30 2020

Act BW	Adj 205	Adj 365	EPD BW	EPD WW	EPD YW	EPD Milk	EPD CE
77	717	1167	1	55	99	25	7

- A heifer bull with very nice growth numbers and potential



Lot 18



Lot 19

19 EASTONDALE TRIBUTE 03'20

MC CUMBER TREMENDOUS 2008
MC CUMBER TRIBUTE 702
 LASSIE 113 OF MC CUMBER

EASTONDALE REALLY WINDY 06'13
EASTONDALE DIANE 03'18
 EASTONDALE DIANE 71'16

O C C EMBLAZON 854E
 O C C DIXIE ERICA 960H
 O C C MISSING LINK 830M
 LASSIE 935 OF MC CUMBER

V D A R REALLY WINDY 4097
 EASTONDALE ANNIE K 60'11
 NF EVEREADY AS2
 WRIGHTS 204 DIANE 2Y

MALE / REG# 2154384 / VKE 3H / JANUARY 25 2020

Act BW	Adj 205	Adj 365	EPD BW	EPD WW	EPD YW	EPD Milk	EPD CE
67	668	1226	-0.9	51	90	23	13

- Excellent heifer bull
- Strong cow family of Erika's



Lot 20

20 EASTONDALE TRIBUTE 09'20

MC CUMBER TREMENDOUS 2008
MC CUMBER TRIBUTE 702
 LASSIE 113 OF MC CUMBER

LOOKOUT HUCK 25T
EASTONDALE ANNIE K 71'09
 SOO LINE ANNIE K 199P

O C C EMBLAZON 854E
 O C C DIXIE ERICA 960H
 O C C MISSING LINK 830M
 LASSIE 935 OF MC CUMBER

FIGURE 8 ANGUS TOM BOY 509R
 FAIRMAC DUCHESS 461P
 CUDLOBE YELLOWSTONE 80M
 GEIS ANNIE K 195'99

MALE / REG# 2157639 / VK 9H / FEBRUARY 03 2020

Act BW	Adj 205	Adj 365	EPD BW	EPD WW	EPD YW	EPD Milk	EPD CE
81	636	1098	1.6	39	73	23	5

- Another smooth made long bodied bull that we believe could be used on heifers
- Out of a 12-year-old cow that has calved in the first cycle again



Lot 21

21 EASTONDALE TRIBUTE 12'20

MC CUMBER TREMENDOUS 2008
MC CUMBER TRIBUTE 702
 LASSIE 113 OF MC CUMBER

4M ELEMENT 405
EASTONDALE QUEEN MOTHER 04'18
 EASTONDALE QUEEN MOTHER 98'11

O C C EMBLAZON 854E
 O C C DIXIE ERICA 960H
 O C C MISSING LINK 830M
 LASSIE 935 OF MC CUMBER

POSS ELEMENT 215
 4M BLACKBIRD 2004
 B HILLS FRL DURATION 606
 EASTONDALE QUEEN MOTHER 58'08

MALE / REG# 2171005 / VK 12H / FEBRUARY 06 2020

Act BW	Adj 205	Adj 365	EPD BW	EPD WW	EPD YW	EPD Milk	EPD CE
85	678	1241	2	51	94	24	5

- Very good bull that could be used on heifers with supervision
- Excellent maternal pedigree in this bull

Lot 22

- Big strong powerful, long bodied bull
- Three maternal brothers have sold in past bull sales as well as one maternal sister
- The Cassie cow family is top end cow family here



22 EASTONDALE STING 24'20

BAR S RANGE BOSS 4002
MERIT STING 7047E
MERIT SOCIALITE 5121C

MINBURN MAIN EVENT 40W
EASTONDALE CASSIE 19'12
EASTONDALE CASSIE 19'07

BAR S RANGE BOSS 1118
BAR S PRIDE 0073
EXAR ONE-IRON 3889B
MERIT SOCIALITE 1223

MINBURN MAIN EVENT 181N
MINBURN BLACKBIRD 100P
DRYLAND MAX 533
G B T CASSIE 2J

MALE / REG# 2157942 / VK 24H / FEBRUARY 09 2020

Act BW	Adj 205	Adj 365	EPD BW	EPD WW	EPD YW	EPD Milk	EPD CE
84	771	1301	2.1	59	105	18	5

23 EASTONDALE STING 76'20

BAR S RANGE BOSS 4002
MERIT STING 7047E
MERIT SOCIALITE 5121C

MERIT BIG DAWG 3049A
EASTONDALE BONNIE LADY 60'16
EASTONDALE BONNIE LADY 113'10

BAR S RANGE BOSS 1118
BAR S PRIDE 0073
EXAR ONE-IRON 3889B
MERIT SOCIALITE 1223

BAR-E-L IRON WILL 32Y
MERIT PRIDE 8651
DRYLAND MAX 533
EASTONDALE BONNIE LADY 103'03

MALE / REG# 2154387 / VKE 76H / FEBRUARY 16 2020

Act BW	Adj 205	Adj 365	EPD BW	EPD WW	EPD YW	EPD Milk	EPD CE
92	675	1312	4.3	45	82	18	1

Lot 23

- Sale feature here
- Thick, deep sided, lots of hair and stylish
- Dam is a moderate, beautiful cow
- Has two very good maternal sisters in the herd



Dam of Lot 23



Dam of Lot 24

Lot 24

- A definite sale feature here as was his brother in last year's sale who sold to Karl Johnston
- Another maternal brother was a sale feature and high seller to David Hepburn
- Dam is 12 years old, sound and calved in the first cycle again this year
- Great hair, hip, scrotal and performance which is typical of the Sting sire group

24 EASTONDALE STING 57'20

BAR S RANGE BOSS 4002
MERIT STING 7047E
MERIT SOCIALITE 5121C

DRYLAND MAX 533
EASTONDALE GAMMER 38'09
MINBURN GAMMER 35K

BAR S RANGE BOSS 1118
BAR S PRIDE 0073
EXAR ONE-IRON 3889B
MERIT SOCIALITE 1223
GEIS MAXIMUM 80'01
HOLLBROOK BLACKWOOD 4H
MINBURN FAME 50H
MINBURN GAMMER 103H

MALE / REG# 2161262 / VK 57H / FEBRUARY 15 2020

Act BW	Adj 205	Adj 365	EPD BW	EPD WW	EPD YW	EPD Milk	EPD CE
90	779	1321	2.1	54	95	22	4

25 EASTONDALE STING 81'20

BAR S RANGE BOSS 4002
MERIT STING 7047E
MERIT SOCIALITE 5121C

COLEMAN CHARLO 0256
EASTONDALE CASSIE 29'15
EASTONDALE CASSIE 08'10

BAR S RANGE BOSS 1118
BAR S PRIDE 0073
EXAR ONE-IRON 3889B
MERIT SOCIALITE 1223
O C C PAXTON 730P
BOHI ABIGALE 6014
S A V 004 TRAVELER 5658
EASTONDALE CASSIE 131'08

MALE / REG# 2161275 / VK 81H / FEBRUARY 18 2020

Act BW	Adj 205	Adj 365	EPD BW	EPD WW	EPD YW	EPD Milk	EPD CE
73	639	1164	2.2	53	90	21	5.5



Lot 25

- Very stylish, long bodied typical Sting son
- Dam is a beautiful uddered cow out of the Cassie cow family again
- A maternal brother sold in last years sale to Robert Brickley of Kennedy



Dam of Lot 25

26 EASTONDALE STING 60'20

BAR S RANGE BOSS 4002
MERIT STING 7047E
MERIT SOCIALITE 5121C

KA BLACK CEDAR 290
EASTONDALE TOPSY 38'12
EASTONDALE TOPSY 33'03

BAR S RANGE BOSS 1118
BAR S PRIDE 0073
EXAR ONE-IRON 3889B
MERIT SOCIALITE 1223
COLE CREEK BLACK CEDAR 46P
KA HAZEL 7048
CJD SCOTCHMAN 10K
TOPSY OF PLEASANT VISTA 3C

MALE / REG# 2161265 / VK 60H / FEBRUARY 15 2020

Act BW	Adj 205	Adj 365	EPD BW	EPD WW	EPD YW	EPD Milk	EPD CE
91	664	1137	3.5	46	82	19	0

- Style and length of body with a ton of hair
- His dam is a very impressive female
- A full sister was a sale feature in our female sale last fall, and we were fortunate to retain her in the choice lot



Dam of Lot 26



Full sister to Lot 26

27 EASTONDALE STING 70'20

BAR S RANGE BOSS 4002
MERIT STING 7047E
MERIT SOCIALITE 5121C

SANKEYS LARAMIE 114
EASTONDALE HENRIETTA 56'15
EASTONDALE HENRIETTA 84'10

BAR S RANGE BOSS 1118
BAR S PRIDE 0073
EXAR ONE-IRON 3889B
MERIT SOCIALITE 1223
SANKEYS LAZER 609 OF 6N
LAFLINS GEORGINA OF 6N 614
B HILLS FRL DURATION 606
EASTONDALE HENRIETTA 63'04

MALE / REG# 2161269 / VK 70H / FEBRUARY 16 2020

Act BW	Adj 205	Adj 365	EPD BW	EPD WW	EPD YW	EPD Milk	EPD CE
84	720	1230	3.4	56	96	19	1

- Really stout, thick made Sting son
- One of my personal favorite bulls all last summer and was noticed and noted by more than one person at the Summer Tour last August



Lot 27

28 EASTONDALE STING 75'20

BAR S RANGE BOSS 4002
MERIT STING 7047E
MERIT SOCIALITE 5121C

SOO LINE KODIAK 1131
EASTONDALE PAULINE 154'14
EASTONDALE PAULINE 1'01

BAR S RANGE BOSS 1118
BAR S PRIDE 0073
EXAR ONE-IRON 3889B
MERIT SOCIALITE 1223
HF KODIAK 5R
GEIS PRIDE 114'99
V D A R NEW TREND 315
2J PAULINE 8B

MALE / REG# 2161271 / VK 75H / FEBRUARY 16 2020

Act BW	Adj 205	Adj 365	EPD BW	EPD WW	EPD YW	EPD Milk	EPD CE
87	761	1228	1.7	54	86	20	7

- Another good, hairy, long bodied Sting bull
- The Pauline cow family ranks very highly in our herd
- Sure to sire a great set of steer calves yet able to keep replacement females if you choose



Lot 28



Lot 29

29 EASTONDALE STING 120'20

BAR S RANGE BOSS 4002
MERIT STING 7047E
MERIT SOCIALITE 5121C

DRYLAND MAX 533
EASTONDALE LADY BONNIE 69'08
EASTONDALE BONNIE LADY 103'03

BAR S RANGE BOSS 1118
BAR S PRIDE 0073
EXAR ONE-IRON 3889B
MERIT SOCIALITE 1223
GEIS MAXIMUM 80'01
HOLLBROOK BLACKWOOD 4H
B.B.A.R HERO 1267
MADSEN'S BONNIE LADY 8L

MALE / REG# 2171018 / VKE 120H / FEBRUARY 25 2020

Act BW	Adj 205	Adj 365	EPD BW	EPD WW	EPD YW	EPD Milk	EPD CE
68	634	1246	3.3	48	82	20	1

- Another strong Sting out of a very good 13-year-old cow
- The Sting daughters we have calved this spring have exceptional udder quality and this bull should do nothing but enhance that trait



Dam of Lot 29



Lot 30

30 EASTONDALE STING 100'20

BAR S RANGE BOSS 4002
MERIT STING 7047E
MERIT SOCIALITE 5121C

DRYLAND MAX 533
EASTONDALE TOPSY 19'08
TOPSY OF PLEASANT VISTA 3C

BAR S RANGE BOSS 1118
BAR S PRIDE 0073
EXAR ONE-IRON 3889B
MERIT SOCIALITE 1223
GEIS MAXIMUM 80'01
HOLLBROOK BLACKWOOD 4H
KENOSEE PARK ATLAS 25W
TOPSY OF PLEASANT VISTA 15Y

MALE / REG# 2161476 / VK 100H / FEBRUARY 22 2020

Act BW	Adj 205	Adj 365	EPD BW	EPD WW	EPD YW	EPD Milk	EPD CE
90	744	1164	2.2	50	84	15	3

- If buying a bull out of a good old proven, long producing cow is a must for you, then this bull must be on your list
- A maternal brother was the high selling bull in our 2016 bull sale for \$18,000 to Bear Creek Angus
- Dam calved again at 13-years-old with another bull calf born in the first cycle



Maternal brother of Lot 30



Lot 31

31 EASTONDALE STING 104'20

BAR S RANGE BOSS 4002
MERIT STING 7047E
MERIT SOCIALITE 5121C

MINBURN MAIN EVENT 40W
EASTONDALE CASSIE 100'12
EASTONDALE CASSIE 131'08

BAR S RANGE BOSS 1118
BAR S PRIDE 0073
EXAR ONE-IRON 3889B
MERIT SOCIALITE 1223
MINBURN MAIN EVENT 181N
MINBURN BLACKBIRD 100P
B HILLS FRL DURATION 606
G B T CASSIE 2J

MALE / REG# 2171020 / VK 104H / FEBRUARY 23 2020

Act BW	Adj 205	Adj 365	EPD BW	EPD WW	EPD YW	EPD Milk	EPD CE
87	629	1127	2.6	45	84	19	3

- Long bodied and smooth made would describe this bull
- Neat small head on him, I believe you could use this bull on heifers
- His daughters could be very nice with the cow families he has on both sides of his pedigree

32

QT MAVERICK 56'20

COLEMAN CHARLO 0256
COLEMAN MAVERICK 5322
 COLEMAN DONNA 3202

O C C PAXTON 730P
 BOHI ABIGALE 6014
 WULFFS EXT 6106
 COLEMAN DONNA 714

N7'S DESPERADO 64D
FAIRLIGHT BLACKBIRD 5F
 ANDERSON BLACKBIRD 6060

BALDRIDGE DOWNLOAD Z013
 N7'S LUCY 5B
 YOUNG DALE ZALMAN 18Z
 WIWA CREEK BLACKBIRD 88'13

MALE / REG# NTG 56H / NTG 56H / FEBRUARY 14 2020

Act BW	Adj 205	Adj 365	EPD BW	EPD WW	EPD YW	EPD Milk	EPD CE
86		1220	1.6	54	97	21	

- 56'20 is another calving ease option and $\frac{3}{4}$ brother to 82'20
- The N7 Desperado 64D daughters have worked well so far with good feet and strong udders

33

QT MAVERICK 82'20

COLEMAN CHARLO 0256
COLEMAN MAVERICK 5322
 COLEMAN DONNA 3202

O C C PAXTON 730P
 BOHI ABIGALE 6014
 WULFFS EXT 6106
 COLEMAN DONNA 714
 BALDRIDGE DOWNLOAD Z013
 N7'S LUCY 5B
 SOUTHLAND FREE STYLE 163U
 PRIME TIME'S 33G LUCY 515

N7'S DESPERADO 64D
FAIRLIGHT LUCY 17F
 SOUTHLAND LUCY 152X

MALE / REG# 2163325 / NTG 82H / FEBRUARY 19 2020

Act BW	Adj 205	Adj 365	EPD BW	EPD WW	EPD YW	EPD Milk	EPD CE
83	676	1104	0.7	43	80	21	

- 82'20 combines a low birth weight with adequate growth out of a first calf heifer
- Coleman Maverick is a new calving ease sire from Colemans
- Every daughter out of 82'20's granddam has been retained



Lot 33

34

EASTONDALE THUNDER 117'20

BAR DOUBLE M THUNDER 67A
BAR DOUBLE M THUNDER 14C
 BAR DOUBLE M ANNABELLA 38Z

CONNEALY THUNDER
 BAR MM EILEEN 182S
 MERIT 9649
 BAR DOUBLE M ANNABELLA 220W

SOO LINE KODIAK 1131
EASTONDALE BARBARA 65'14
 EASTONDALE BARBARA 66'06

HF KODIAK 5R
 GEIS PRIDE 114'99
 B.B.A.R HERO 1267
 EASTONDALE BARBARA 31G

MALE / REG# VK 117H / VK 117H / FEBRUARY 25 2020

Act BW	Adj 205	Adj 365	EPD BW	EPD WW	EPD YW	EPD Milk	EPD CE
95	766	1296	3.8	58	96	24	-2

- Big strong long bodied stock bull
- Only Thunder bull in the offering as his sire was injured shortly after turn out
- Sons in past bull sales were very popular

Thank You!

Eastondale Angus

SUMMER CELEBRATION

Sale

Thank you to everyone who made a purchase and those that showed an interest in our Summer Celebration Female Sale.

The Saskatchewan Angus Summer tour was a great few days of Angus hospitality. We enjoyed it very much and thank everyone who took part!



Lot 35

- A heifer bull candidate for sure
- Just a note this bull was orphaned in August when we lost his mother in the pasture
- Note he still had a 712lb adj weaning weight

35 EASTONDALE ENDURANCE 171'20

EASTONDALE ENDURANCE 82'15
LORENZ ENDURANCE 4F
 LORENZ ANNIE 43D

HF REFLECTION 241C
EASTONDALE GAMMER 27'18
 EASTONDALE GAMMER 38'11

EASTONDALE DURATION 79'09
 EASTONDALE DYNA LASS 140'13
 WALKERBRAE WARRIOR 116Z
 SANDY BAR ANNIE 123S

LLB REFLECTION 607A
 HF TIBBIE 77Z
 B HILLS FRL DURATION 606
 EASTONDALE GAMMER 38'09

MALE / REG# 2162823 / VK 171H / MARCH 09 2020

Act BW	Adj 205	Adj 365	EPD BW	EPD WW	EPD YW	EPD Milk	EPD CE
78	712	1217	1.2	47	84	24	5

36 EASTONDALE ENDURANCE 189'20

EASTONDALE ENDURANCE 82'15
LORENZ ENDURANCE 4F
 LORENZ ANNIE 43D

N7'S DESPERADO 64D
FAIRLIGHT JESTRESS 11F
 BLAIRS JESTRESS 328Y

EASTONDALE DURATION 79'09
 EASTONDALE DYNA LASS 140'13
 WALKERBRAE WARRIOR 116Z
 SANDY BAR ANNIE 123S

BALDRIDGE DOWNLOAD Z013
 N7'S LUCY 5B
 DURALTA ULTIMATION 137U
 BLACK WHEEL JESTRESS 55W

MALE / REG# 2163484 / VK 189H / MARCH 19 2020

Act BW	Adj 205	Adj 365	EPD BW	EPD WW	EPD YW	EPD Milk	EPD CE
72	642	1211	0.2	34	69	20	9



Lot 36

- Extremely good Endurance son that would be a high-quality heifer bull
- A heifers first calf

37 EASTONDALE ENDURANCE 148'20

EASTONDALE ENDURANCE 82'15
LORENZ ENDURANCE 4F
LORENZ ANNIE 43D

HF REFLECTION 241C
EASTONDALE BARBARA 59'18
EASTONDALE BARBARA 65'14

EASTONDALE DURATION 79'09
EASTONDALE DYNA LASS 140'13
WALKERBRAE WARRIOR 116Z
SANDY BAR ANNIE 123S

LLB REFLECTION 607A
HF TIBBIE 77Z
SOO LINE KODIAK 1131
EASTONDALE BARBARA 66'06

MALE / REG# 2162611 / VK 148H / MARCH 03 2020

Act BW	Adj 205	Adj 365	EPD BW	EPD WW	EPD YW	EPD Milk	EPD CE
80	782	1200	1.7	51	96	24	4.5

- Really nice heifer bull
- One of the first calves sired by Endurance
- Structurally correct and lots of hair just like his sire



Lot 37

38 EASTONDALE HOMEGROWN 05'20

CTS REMEDY 1T01
ELLINGSON HOMEGROWN 6035
EA BLANCHE 4137

BAR DOUBLE M THUNDER 14C
EASTONDALE GAMMER 51'18
EASTONDALE GAMMER 90'11

CONNEALY THUNDER
CTS 7V03 BELLEMERE MAID 9T02
ELLINGSON FORMAT 2205
EA BLANCHE 1137

BAR DOUBLE M THUNDER 67A
BAR DOUBLE M ANNABELLA 38Z
CU ALLIANCE 074U
MINBURN GAMMER 35K

MALE / REG# 2157532 / VK 5H / JANUARY 29 2020

Act BW	Adj 205	Adj 365	EPD BW	EPD WW	EPD YW	EPD Milk	EPD CE
83	734	1265	2.3	52	96	28	3

- A bull that could be used on straight angus bred heifers
- Heifers first calf born unassisted



Lot 38

39 EASTONDALE HOMEGROWN 35'20

CTS REMEDY 1T01
ELLINGSON HOMEGROWN 6035
EA BLANCHE 4137

PA FORTITUDE 2500
EASTONDALE GAMMER 54'18
EASTONDALE GAMMER 94'16

CONNEALY THUNDER
CTS 7V03 BELLEMERE MAID 9T02
ELLINGSON FORMAT 2205
EA BLANCHE 1137

GAR-EGL PROTEGE
G G CLARA 0171
NF EVEREADY AS2
EASTONDALE GAMMER 38'11

MALE / REG# 2158129 / VK 35H / FEBRUARY 12 2020

Act BW	Adj 205	Adj 365	EPD BW	EPD WW	EPD YW	EPD Milk	EPD CE
84	818	1423	2.7	65	116	25	2.0

- Will be a sure find in the pen on sale day
- Extreme middle and gut capacity
- Excellent EPD profile ranking in the top 10% for growth traits
- Again a heifers first calf





Lot 40

40 EASTONDALE RITO 152'20

H R A RITO 203-326
YOUNKIN RITO 7175
YA BLACK BELLE 175

CONNEALY CONSENSUS 7229
EASTONDALE FOREVER LADY 19'14
EASTONDALE FOREVER LADY 72'10

PBC 707 1M F0203
LASSIE ADVANTAGE 6419 J D Y
ADVANTAGE TRAVELER 749 JDY
YA BLACK BELLE 715

CONNEALY CONSENSUS
BLUE LILLY OF CONANGA 16
STEVENSON MONEYMAKER R185
GDAR FOREVER LADY 9136

MALE / REG# 2162640 / VK 152H / MARCH 04 2020

Act BW	Adj 205	Adj 365	EPD BW	EPD WW	EPD YW	EPD Milk	EPD CE
91	764	1148	3	52	90	23	1

- Really well muscled bull in a moderate framed package
- Dam has great feet under her as all cows in the forever lady cow family do



Dam of Lot 41

41 EASTONDALE RITO 141'20

H R A RITO 203-326
YOUNKIN RITO 7175
YA BLACK BELLE 175

B HILLS FRL DURATION 606
EASTONDALE CASSIE 131'08
G B T CASSIE 2J

PBC 707 1M F0203
LASSIE ADVANTAGE 6419 J D Y
ADVANTAGE TRAVELER 749 JDY
YA BLACK BELLE 715

LEACHMAN RIGHT TIME
H A BELETTA 0219
KENWAW TOUCHSTONE 5F
BIEVER'S CASSIE 51F

MALE / REG# 2162535 / VK 141H / MARCH 02 2020

Act BW	Adj 205	Adj 365	EPD BW	EPD WW	EPD YW	EPD Milk	EPD CE
77	707	1165	0.5	38	61	20	4

- Heifer bull approved
- His mother is one of the most highly regarded cows on the place and is very sound at the age of 13
- May be the sleeper bull of the offering



Lot 42

42 EASTONDALE RITO 121'20

H R A RITO 203-326
YOUNKIN RITO 7175
YA BLACK BELLE 175

BAD LANDS INITIATIVE 375X
EASTONDALE LADY BONNIE 95'12
EASTONDALE BONNIE LADY 103'03

PBC 707 1M F0203
LASSIE ADVANTAGE 6419 J D Y
ADVANTAGE TRAVELER 749 JDY
YA BLACK BELLE 715

SANDY CREEK INITIATIVE 52T
BAD LANDS LADY 311N
B.B.A.R HERO 1267
MADSEN'S BONNIE LADY 8L

MALE / REG# 2154573 / VKE 121H / FEBRUARY 25 2020

Act BW	Adj 205	Adj 365	EPD BW	EPD WW	EPD YW	EPD Milk	EPD CE
92	727	1226	3.4	43	71	19	-1

- Strong maternal pedigree
- The 7175 daughters we have calved this spring have high udder quality
- Three maternal sisters retained in herd

H R A RITO 203-326
YOUNKIN RITO 7175
YA BLACK BELLE 175

PBC 707 1M F0203
LASSIE ADVANTAGE 6419 J D Y
ADVANTAGE TRAVELER 749 JDY
YA BLACK BELLE 715

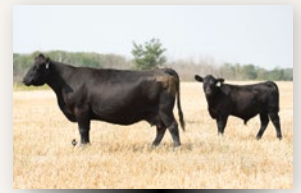
B HILLS FRL DURATION 606
EASTONDALE BETSY 87'08
EASTONDALE BETSY 89'01

LEACHMAN RIGHT TIME
H A BELETTA 0219
STEVENSON BRUNO 561G
EASTONDALE BETSY 43'99

MALE / REG# VK 163H / VK 163H / MARCH 05 2020

Act BW	Adj 205	Adj 365	EPD BW	EPD WW	EPD YW	EPD Milk	EPD CE
86	713	1080	2.6	45	75	19	0

- Dam is a 12-year-old cow
- Six maternal brothers have sold in past bull sales averaging \$6500 with one being a high seller to Bear Creek Angus at \$11,000



Dam of Lot 43

H R A RITO 203-326
YOUNKIN RITO 7175
YA BLACK BELLE 175

PBC 707 1M F0203
LASSIE ADVANTAGE 6419 J D Y
ADVANTAGE TRAVELER 749 JDY
YA BLACK BELLE 715

KBJ ROGUE II 203H
EASTONDALE MISS ESSENCE 26'11
DRYLAND MISS ESSENCE 101

G D A R ROGUE 640
KBJ QUEEN 69X
N BAR EMULATION EXT
JRM ALBERTA LASS 368

MALE / REG# VK 169H / VK 169H / MARCH 07 2020

Act BW	Adj 205	Adj 365	EPD BW	EPD WW	EPD YW	EPD Milk	EPD CE
86	690	1036	1.9	36	63	21	3

- His dam is a beautiful Angus cow still at the age of ten and we were so happy to get a full sister to him this year



Dam of Lot 44

LLB REFLECTION 607A
HF REFLECTION 241C
HF TIBBIE 77Z

MCATL REFLECTION 120-577
SOO LINE DANA 9028
CONNEALY CONSENSUS 7229
HF TIBBIE 100M

BAD LANDS INITIATIVE 375X
EASTONDALE MAYFLOWER 152'14
EASTONDALE MAYFLOWER 27'05

SANDY CREEK INITIATIVE 52T
BAD LANDS LADY 311N
LT 598 BANDO 9074
EASTONDALE MAYFLOWER 109'03

MALE / REG# 2162832 / VK 193H / MARCH 23 2020

Act BW	Adj 205	Adj 365	EPD BW	EPD WW	EPD YW	EPD Milk	EPD CE
84	796	1251	2	62	113	27	4

- This will be the last Reflection son we will sell as he is gone, and we never did draw semen on the old bull
- This calf is really a deep sided and thick compact package
- Dam may be one of the stoutest made cows we have on the place
- Note his birth to weaning numbers



Lot 45

TERMS & CONDITIONS

Terms: The terms of the sale are cash or cheque payable at par at the sale unless satisfactory credit arrangements have been made previous to the sale. The right of property shall not pass until after settlement is made. All settlements must be made with the clerks of the sale before any cattle will be released. The auctioneer shall have the right to refuse bids from anyone who has a previous record of default in payment or who has not made proper credit clearance to the sale with the owner or Sales Manager.

Bidding: Each animal is to be sold to the highest bidder. No by-bidding will be permitted. A reasonable price base may be set.

Disputes: In case of disputes, bidding will be reopened between the parties involved. If no further bid is made, the buyer will be the person from whom the auctioneer accepted the last bid. The auctioneer's decision in such matters is final.

Purchaser's Risk: Each animal becomes the risk of the purchaser as soon as sold. Animals will be cared for at the purchaser's risk for a reasonable length of time.

Announcements: Errors discovered in the catalogue will be corrected by announcements from the auction stand at sale time and such corrections will take precedence over the printed matter in the catalogue. Buyers are cautioned to pay close attention to announcements.

Certificate of Registry: Each animal will carry papers issued by the Canadian Angus Association. A certificate of registry duly transferred will be furnished to the buyers for each animal after settlement has been made.

Breeders Guarantee, Bulls: Should any bull (14) fourteen months of age or over, fail to prove a breeder after being used on cows known to be breeders, the matter shall be reported in writing to the seller within (6) six months following date of purchase or (6) six months after the bull has reached (14) fourteen months of age. The seller will then have the right and privilege of (6) six months to prove the bull a breeder.

No guarantee is given that semen collected from the bull will freeze.

In no event shall the seller be responsible for more than the purchase price.

The seller is not responsible for damage caused by foreign bodies after the animal has been sold nor for sickness not apparent at sale time.

Exception guarantee: In cases where the animal was subjected to hormonal or surgical reproduction techniques after the sale, this guarantee shall be null and void.

Settlement: Transportation charges on animals returned to the seller are for account of the purchaser. No incidental expenses such as feed, care, A.I., signing fees, interest, veterinary charges, etc., will be charged by either party when making settlement. If the seller is successful in proving the animal in question to be a breeder, the said animal will be reclaimed by the purchaser at his expense. Should the seller fail to prove the animal a breeder, then the buyer is guaranteed a satisfactory replacement F.O.B. ranch or location of origin or a refund of the actual price. Should a dispute arise over the quality of the replacement animal, the Sale Management will appoint a mediator.

Accidents: Although every precaution will be taken to protect the safety and comfort of buyers, neither the sales manager, auctioneer, or sellers assume any responsibility in this matter and disclaim any liability, legal or otherwise, in the event of accident or loss of property.

Mail or Telephone Bids: Bidders unable to attend the sale may phone or mail their bids and instructions to the sale manager, auctioneer, or special representatives. Bids must be received in sufficient time prior to the sale.

Rights and Obligations: The above terms and conditions of the sale shall continue a contract between the buyer and the seller and be equally binding to both. Resale of animals following purchase in this sale shall constitute a separate transaction which is not covered by the terms and conditions of this sale.

CASTLEROCK MARKETING
Box 415, Swift Current, SK S9H 3V8

for 70 Years

GENETICS OUR CUSTOMERS HAVE COUNTED ON