

18th Annual **APRIL 7th**
ON THE FARM BULL SALE 2025



WAWOTA, SK / SALE TIME 1:30PM



Join us for lunch at 12:00 pm

*Pre sale viewing and Eastondale
hospitality after the sale*



TO BID ONLINE

Please follow these steps to register to bid online:

- 1) To Bid Online visit www.livestockplus.ca. A sale listing can be seen on the home page.
- 2) Click the Register to Bid Online Button to the right of the sale you are choosing to bid on.
- 3) We converted over to a brand new system at the end of November 2018 to make the bidding experience more enjoyable. Therefore, your old account will not work. You will need to create a new account. Once created a link will be sent to confirm the account and you will receive a username to be used with the password you have created.
- 4) If you have already created a new account then proceed to the Logging into the Auction with your username and password.

It's very simple, if you have any problems please contact: 306-631-9254

EASTONDALE ANGUS

Dale, Shelly and Erika Easton
Nolan Glover, *Herdsmen* 306.575.6955
Box 410, Wawota, Sk, S0G 5A0
Tel: 306.739.2805, Cell: 306.577.7456
Email: eastondale.angus@sasktel.net,
www.eastondaleangus.com



Find us on facebook

CASTLEROCK MARKETING
Shane & Tammy Castle
306.741.7485
Mark Forsyth 306.784.7844
www.castlerockmarketing.com



18th Annual **APRIL 7th**
ON THE FARM BULL SALE 2025

Eastondale

WAWOTA, SK / SALE TIME 1:30PM

ANGUS

SALE DAY PHONES

<i>Home</i>	306.739.2805
<i>Dale</i>	306.577.7456
<i>Erika</i>	306.577.7457
<i>Nolan Glover</i>	306.575.6955
<i>Shane Castle</i>	306.741.7485
<i>Mark Forsyth</i>	306.784.7844

SALE STAFF

<i>Auctioneer</i> Ryan Hurlburt	306.292.9812
<i>Ring Staff</i> Kolton McIntosh	204.280.0359
<i>Ring Staff</i> Scott Tibble	204.734.0210
<i>Castlerock Marketing</i> Shane Castle	306.741.7485
<i>Castlerock Marketing</i> Mark Forsyth	306.784.7844

BULL VIDEOS

www.eastondaleangus.com or www.castlerockmarketing.com

INSURANCE

Shackelton Insurance Brokerage Ltd
Terry Shackelton 306-224-2155

SEMEN INTEREST

Eastondale Angus reserves 1/3 semen interest on all sale bulls.

BULL BOARD

We will keep the bulls free of charge until May 1st. After May 1st at cost.
All bulls staying at Eastondale must be insured.

DIRECTIONS TO THE FARM

10 miles west of Wawota, SK on Highway 48 or 5 miles north of
Kenosee Lake on Highway 9, 1/2 mile east on Highway 48

ACCOMMODATIONS

Kenosee Inn 306.577.2099
(5 mins south of farm)



We would like to welcome you to our annual bull sale. Where does a year go wow! It seems not that long ago we were hosting you and delivering your bulls. Opening the trailer door in your yard or pasture is the most enjoyable job for me.

In the past year we have seen a spike in calf prices like no other! It is so nice to go to sale barns and see producers with smiles on their faces, finally they can breathe a little easier and make the off improvement that has been put on the back burner for so long. We all hear "I wonder how long it is going to last." I certainly do not have a crystal ball but how could it not last for some time, the North American cow herd is at its lowest numbers in a long time and our North American population is growing at a steady pace. There is a shortage of the number one source of protein on the continent. Great times are to be had in the cow business, enjoy it to the end whenever that may be.

With that said both, us as a seedstock producer and you as commercial cattlemen must do the best we can in these bullish times to make sure we create the best product for the people who pay our wages, "The consumer". By raising efficient and desirable beef, and that starts by choosing the best genetics we can from the producers who care the most.

Our bulls are fed for 3lb a day gain and are not pushed or hurt in anyway, we do not believe! The TMR ration is designed by a professional nutritionist. Just like us we must look after our own nutrition to be healthy and productive. We try to provide every piece of information you might need to make informative proper decisions in your purchases here. We truly do care! You do not have to buy the highest performing bull but if you think that is what you might need try to select a bull in that category.

Everyday is open house here, so if you can stop today or any day before the sale please do as we would love to walk with you through this year's bull pen. If you cannot make it in person, call myself, Nolan or Erika and we can help you with any questions you may have with selections. Watch the videos as they help immensely, call Shane Castle or Mark Forsyth on our sale staff as they know our cow hers very well and they are instructed to give you an honest opinion on our cattle.

Hope to see you on sale day, April 7th with a great meal at 12 and the sale starting at 1:30.

Thanks,

*Dale, Shelly & Erika
Nolan Glover*



The 18th Annual Eastondale Angus Bull Sale is here and coming off a red hot "Part of the Program" sale last December! A fantastic offering of Eastondale genetics that have been the foundation of the breeding program for decades. Staying the course and following the breeding compass has delivered the form following function, a breeder stamp if you will. Balancing the lines of acceptable performance but always about what are the females going to look like is the question!

The 2025 offering of bulls has some fresh genetics that have nicked well with the cows delivering another consistent pen of bulls lead by the Pacific sons. The Droptine bulls are another new sire group who was the High Selling Bull out of the Short Grass sale and came out of a 12 year old with a great track record! Consistency has been

CRMA A WORD FROM CASTLEROCK

the focus and it will always be at Eastondale and be sure to check out the Coalition sons, highly maternal with plenty of performance his sons have topped the bull sale and his daughters were sought after. Be sure to stop by and go through the pen with Dale and Nolan and be sure to check out the cows behind the bulls.

Any questions regarding the offering reach out to us at Castlerock as we know the herd well!

See you sale day!

Shane Castle

Thank You
to our 2024 Buyers

Excellerator Genetics
Clint Winters
Bob & Lois Brickley
Kary Family Farm
DJ Cattle Co.
Jeff Hunter
Clayridge Stock Farm Inc.
Bourhis Ranch Ltd
Swenco Angus
Darrell Petterson
Erickson Farms
Sunnyside Farms & Feedyard Inc.
Peake Cattle Co
Lee & Jackie Watson
Dave & Cheryl Barrett
Switzer Land & Cattle Ltd

Bill MacPherson
Chris MacPherson
Boutin-Lincoln Cattle
G & C Farms
Diamond C Land & Cattle
Brown Ranch Inc.
Fairlight Farms
Tim Winters
Ferch Farms
JL White Farms
Westview Farms Ltd
Fred & Violet Lansdall
Flying B Ranching Ltd
Wilbar Cattle Co.
HR Hahn Cattle Co.
Duralta Farms Inc.

Valley Blossom Ranch
66 Ranch
Golden Oak Livestock
Linden Cattle Co.
Belvin Angus
Charolette Hookenson
Lorenz Angus
Donfield Farms
LCL Farms
Bloom Cattle Co.
Avelyn Angus
Autumn Dew
CMT Farms
Smartdale Stock Farms
Triple H Angus
Nu Horizon

Northernview Angus
Rivercrest Angus Ranch
Angus Ridge
Brockhill Angus
Four Bar X Ranch
Border Butte
AT Angus
Freyburn Angus Farms
NYK Cattle Co
Cash Cattle Co.
Holly Madsen
Willowside Angus
LSP Angus
AJ Angus
Harprey Farms

TERMS AND CONDITIONS

Terms: The terms of the sale are cash or cheque payable at par at the sale unless satisfactory credit arrangements have been made previous to the sale. The right of property shall not pass until after settlement is made. All settlements must be made with the clerks of the sale before any cattle will be released. The auctioneer shall have the right to refuse bids from anyone who has a previous record of default in payment or who has not made proper credit clearance to the sale with the owner or Sales Manager.

Bidding: Each animal is to be sold to the highest bidder. No by-bidding will be permitted. A reasonable price base may be set.

Disputes: In case of disputes, bidding will be reopened between the parties involved. If no further bid is made, the buyer will be the person from whom the auctioneer accepted the last bid. The auctioneer's decision in such matters is final.

Purchaser's Risk: Each animal becomes the risk of the purchaser as soon as sold. Animals will be cared for at the purchaser's risk for a reasonable length of time.

Announcements: Errors discovered in the catalogue will be corrected by announcements from the auction stand at sale time and such corrections will take precedence over the printed matter in the catalogue. Buyers are cautioned to pay close attention to announcements.

Certificate of Registry: Each animal will carry papers issued by the Canadian Angus Association. A certificate of registry duly transferred will be furnished to the buyers for each animal after settlement has been made.

Breeders Guarantee, Bulls: Should any bull (14) fourteen months of age or over, fail to prove a breeder after being used on cows known to be breeders, the matter shall be reported in writing to the seller within (6) six months following date of purchase or (6) six months after the bull has reached (14) fourteen months of age. The seller will then have the right and privilege of (6) six months to prove the bull a breeder. No guarantee is given that semen collected from the bull will freeze.

In no event shall the seller be responsible for more than the purchase price.

The seller is not responsible for damage caused by foreign bodies after the animal has been sold nor for sickness not apparent at sale time.

Exception guarantee: In cases where the animal was subjected to hormonal or surgical reproduction techniques after the sale, this guarantee shall be null and void.

Settlement: Transportation charges on animals returned to the seller are for account of the purchaser. No incidental expenses such as feed, care, A.I., signing fees, interest, veterinary charges, etc., will be charged by either party when making settlement. If the seller is successful in proving the animal in question to be a breeder, the said animal will be reclaimed by the purchaser at his expense. Should the seller fail to prove the animal a breeder, then the buyer is guaranteed a satisfactory replacement F.O.B. ranch or location of origin or a refund of the actual price. Should a dispute arise over the quality of the replacement animal, the Sale Management will appoint a mediator.

Accidents: Although every precaution will be taken to protect the safety and comfort of buyers, neither the sales manager, auctioneer, or sellers assume any responsibility in this matter and disclaim any liability, legal or otherwise, in the event of accident or loss of property.

Mail or Telephone Bids: Bidders unable to attend the sale may phone or mail their bids and instructions to the sale manager, auctioneer, or special representatives. Bids must be received in sufficient time prior to the sale.

Rights and Obligations: The above terms and conditions of the sale shall continue a contract between the buyer and the seller and be equally binding to both. Resale of animals following purchase in this sale shall constitute a separate transaction which is not covered by the terms and conditions of this sale.

Thank You

FA



Eastondale

Female Sale "Part of the Program"

Thank you to the buyers and bidders of our 2024 female sale!
We are very grateful for the support of our program.



Lot 1

EA EASTONDALE TSUNAMI 68'24 1

HOOVER NO DOUBT
STERLING PACIFIC 904
BALDRIDGE ISABEL B082

LCL WIDESPREAD 4E
EASTONDALE MAGNOLIA 151'19
EASTONDALE MAGNOLIA 91'15E

MOGCK BULLSEYE
MISS BLACKCAP ELLSTON J2
G A R PROPHET
BALDRIDGE ISABEL Y69

WHITSTONE WIDESPREAD MB
ROYAL LUCY DRCC 6002SE
CROWFOOT EQUATION 5793R
BAR-E-L MAGNOLIA 15T

REG# 2384337 / VK 68M / FEBRUARY 16 2024

Act BW	Adj 205	Adj 365	EPD BW	EPD WW	EPD YW	EPD Milk	EPD CE
95	734	1359	3.7	65	113	18	0

- Has been a favorite bull all his life, in both the pasture last summer and the pen this winter.
- His dam is a powerful, deep sided, big hipped cow with outstanding udder quality.



Lot 2

EA EASTONDALE PACIFIC 49'24 2

HOOVER NO DOUBT
STERLING PACIFIC 904
BALDRIDGE ISABEL B082

BEAR CREEK T.D. 796A
EASTONDALE BETSY 108'16
EASTONDALE BETSY 108'03

MOGCK BULLSEYE
MISS BLACKCAP ELLSTON J2
G A R PROPHET
BALDRIDGE ISABEL Y69

SSA 4336 DENSITY 26T
LLB LASSIE 796W
B.B.A.R HERO 1267
EASTONDALE BETSY 43'99

REG# 2384324 / VK 49M / FEBRUARY 13 2024

Act BW	Adj 205	Adj 365	EPD BW	EPD WW	EPD YW	EPD Milk	EPD CE
87	756	1372	1.5	67	113	17	4

- The big boy in the bull pen with a bit more frame but definite depth of rib to go along with the frame.
- #1 weaning ratio of 112 and adj 756lb weaning weight.
- Pounds of calf pays these days, and this bull is sure to sire performance and pay weight.



Lot 3

- A personal favorite in the pen.
- This bull's dam has been no miss.
- A maternal sister is a beautiful Endurance daughter retained in herd, a maternal sister was the high selling heifer calf in the Touch of Class sale for \$9500 to Big Iron Ranch and a maternal sister was a sale feature in last fall's female sale selling to Golden Oak Livestock.
- Very hard to look past this good herd sire prospect.

- A sale feature and member of our Agribition pen of three bulls.
- Tidal Wave's dam is a beautiful Endurance daughter with excellent udder quality.
- Note his 800lb adj weaning weight and 1350lb adj yearling weight.
- Has a great masculine look to him.



Lot 4

EA EASTONDALE PACIFIC 69'24 3

HOOVER NO DOUBT
STERLING PACIFIC 904
BALDRIDGE ISABEL B082

EASTONDALE REALLY WINDY 06'13
EASTONDALE BONNIE LADY 09'18
EASTONDALE BONNIE LADY 60'16

MOGCK BULLSEYE
MISS BLACKCAP ELLSTON J2
G A R PROPHET
BALDRIDGE ISABEL Y69
V D A R REALLY WINDY 4097
EASTONDALE ANNIE K 60'11
MERIT BIG DAWG 3049A
EASTONDALE BONNIE LADY 113'10

REG# 2384332 / VKE 69M / FEBRUARY 16 2024

Act BW	Adj 205	Adj 365	EPD BW	EPD WW	EPD YW	EPD Milk	EPD CE
90	708	1234	2.9	55	95	24	2

EA EASTONDALE TIDAL WAVE 26'24 4

HOOVER NO DOUBT
STERLING PACIFIC 904
BALDRIDGE ISABEL B082

LORENZ ENDURANCE 4F
EASTONDALE MISS WIX 13'22
SFL MISS WIX 0114

MOGCK BULLSEYE
MISS BLACKCAP ELLSTON J2
G A R PROPHET
BALDRIDGE ISABEL Y69
EASTONDALE ENDURANCE 82'15
LORENZ ANNIE 43D
U2 COALITION 38E
SFL MISS WIX 6123

REG# 2384312 / VKE 26M / FEBRUARY 08 2024

Act BW	Adj 205	Adj 365	EPD BW	EPD WW	EPD YW	EPD Milk	EPD CE
91	803	1352	3.4	73	133	19	1



Lot 5

EA EASTONDALE PACIFIC 55'24 5

HOOVER NO DOUBT
STERLING PACIFIC 904
BALDRIDGE ISABEL B082

SANKEYS LARAMIE 114
EASTONDALE BLACKBIRD 20'17
EASTONDALE BLACKBIRD 149'10

MOGCK BULLSEYE
MISS BLACKCAP ELLSTON J2
G A R PROPHET
BALDRIDGE ISABEL Y69

SANKEYS LAZER 609 OF 6N
LAFINS GEORGINA OF 6N 614
DRYLAND MAX 533
EASTONDALE BLACKBIRD 24G

REG# 2384327 / VK 55M / FEBRUARY 14 2024

Act BW	Adj 205	Adj 365	EPD BW	EPD WW	EPD YW	EPD Milk	EPD CE
96	675	1165	2.5	55	99	17	-1

- A Maternal sister was our lead off female in our Piece of the Program sale selling to Wilbar Cattle Co for \$20,000.
- A bull with no real holes in his phenotype.



Lot 6

EA EASTONDALE PACIFIC 58'24 6

HOOVER NO DOUBT
STERLING PACIFIC 904
BALDRIDGE ISABEL B082

ALBERDA TRAVELER 416
LOCUST GROVE ERICA 7D
LLB ERICA 220N

MOGCK BULLSEYE
MISS BLACKCAP ELLSTON J2
G A R PROPHET
BALDRIDGE ISABEL Y69
D H D TRAVELER 6807 OSF
ALBERDA QUEEN KIMBERLY 222
B/R NEW FRONTIER 095
MADER ERICA 22L

REG# 2384329 / VK 58M / FEBRUARY 15 2024

Act BW	Adj 205	Adj 365	EPD BW	EPD WW	EPD YW	EPD Milk	EPD CE
91	752	1337	2.4	59	107	18	4

- Another really good bull to add performance and pay weight to your calf crop.
- Take note of his adj weaning and yearling weights.
- Dam is a very good Traveller 416 daughter.
- Maternal sister sold to Bloom Cattle Co in last Decembers female sale.



Lot 7

EA EASTONDALE PACIFIC 65'24 7

HOOVER NO DOUBT
STERLING PACIFIC 904
BALDRIDGE ISABEL B082

KA BLACK CEDAR 290
EASTONDALE DUCHESS 77'13
EASTONDALE DUCHESS 111'11

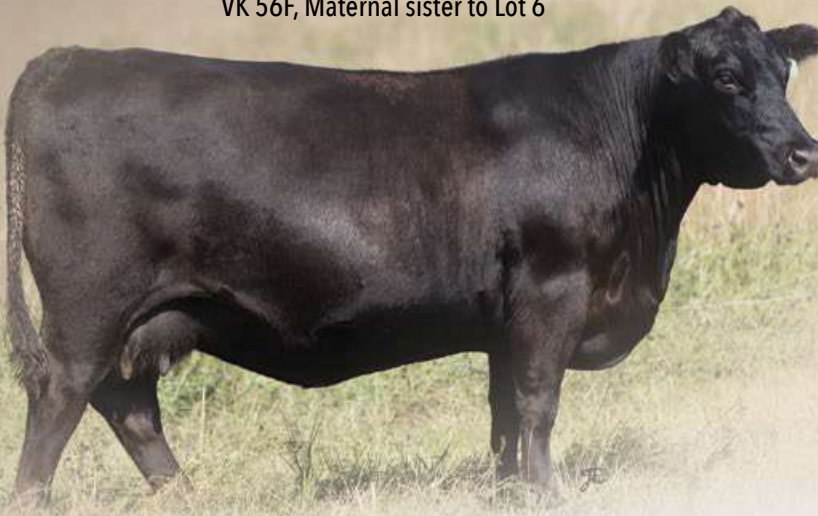
MOGCK BULLSEYE
MISS BLACKCAP ELLSTON J2
G A R PROPHET
BALDRIDGE ISABEL Y69
COLE CREEK BLACK CEDAR 46P
KA HAZEL 7048
DRYLAND MAX 533
EASTONDALE DUCHESS 04'07

REG# 2384335 / VK 65M / FEBRUARY 16 2024

Act BW	Adj 205	Adj 365	EPD BW	EPD WW	EPD YW	EPD Milk	EPD CE
88	762	1216	2	52	94	19	3

- This bull has one of our best cows for his dam, beautiful udder and feet for her age plus a production record that is top tier.

VK 56F, Maternal sister to Lot 6



VK 108D, Dam to Lot 2



VKE 9F, Dam to Lot 3



VK 91C
Dam to Lot 15, Granddam to Lot 1

VK 20E, Dam to Lot 5



SFL 0114H, Granddam to Lot 4



VKE 13K, Dam to Lot 4



WTM 7D, Dam to Lot 6

VKE 60D, Granddam to Lot 3



VKE 77A, Dam to Lot 7,
Granddam to Lot 33



Lot 8

- A maternal sister was a choice lot in last Decembers female sale, where we were able to retain her, thankfully.
- Really easy bull to find in the pen.

- A bull with a real smooth made look to him.
- His dam is a beautiful uddered young cow.



Lot 9

EA EASTONDALE PACIFIC 04'24 8

HOOVER NO DOUBT
STERLING PACIFIC 904
BALDRIDGE ISABEL B082

SANKEYS LARAMIE 114
EASTONDALE GAMMER 40'17
EASTONDALE GAMMER 38'09

MOGCK BULLSEYE
MISS BLACKCAP ELLSTON J2
G A R PROPHET
BALDRIDGE ISABEL Y69
SANKEYS LAZER 609 OF 6N
LAFLINS GEORGINA OF 6N 614
DRYLAND MAX 533
MINBURN GAMMER 35K

REG# 2379925 / VK 4M (TWIN TO 3M) / FEBRUARY 02 2024

Act BW	Adj 205	Adj 365	EPD BW	EPD WW	EPD YW	EPD Milk	EPD CE
88	627	1180	1.5	58	106	16	3

EA EASTONDALE PACIFIC 67'24 9

HOOVER NO DOUBT
STERLING PACIFIC 904
BALDRIDGE ISABEL B082

MERIT STING 7047E
EASTONDALE TOPSY 34'19
EASTONDALE TOPSY 38'12

MOGCK BULLSEYE
MISS BLACKCAP ELLSTON J2
G A R PROPHET
BALDRIDGE ISABEL Y69
BAR S RANGE BOSS 4002
MERIT SOCIALITE 5121C
KA BLACK CEDAR 290
EASTONDALE TOPSY 33'03

REG# 2384333 / VK 67M / FEBRUARY 16 2024

Act BW	Adj 205	Adj 365	EPD BW	EPD WW	EPD YW	EPD Milk	EPD CE
86	666	1178	2.5	59	103	14	2

EA EASTONDALE PACIFIC 03'24 10

HOOVER NO DOUBT
STERLING PACIFIC 904
BALDRIDGE ISABEL B082

SANKEYS LARAMIE 114
EASTONDALE GAMMER 40'17
EASTONDALE GAMMER 38'09

MOGCK BULLSEYE
MISS BLACKCAP ELLSTON J2
G A R PROPHET
BALDRIDGE ISABEL Y69

SANKEYS LAZER 609 OF 6N
LAFLINS GEORGINA OF 6N 614
DRYLAND MAX 533
MINBURN GAMMER 35K

REG# 2379926 / VK 3M (TWIN TO 4M) / FEBRUARY 02 2024

Act BW	Adj 205	Adj 365	EPD BW	EPD WW	EPD YW	EPD Milk	EPD CE
83	671	1058	1.5	58	106	16	3

- 03'24's dam stems from the hard-working Gammer cow family who has done an outstanding job here.



Lot 10

EA EASTONDALE PACIFIC 45'24 11

HOOVER NO DOUBT
STERLING PACIFIC 904
BALDRIDGE ISABEL B082

LORENZ ENDURANCE 4F
EASTONDALE MEERA 56'22
WARD'S C MEERA 28C

MOGCK BULLSEYE
MISS BLACKCAP ELLSTON J2
G A R PROPHET
BALDRIDGE ISABEL Y69

EASTONDALE ENDURANCE 82'15
LORENZ ANNIE 43D
MOHNEN SOUTH DAKOTA 402
C WARD'S MEERA 7Z

REG# 2384322 / VK 45M / FEBRUARY 12 2024

Act BW	Adj 205	Adj 365	EPD BW	EPD WW	EPD YW	EPD Milk	EPD CE
90	714	1234	2.7	60	112	15	-1

- Another member of our Agribition pen of three bulls.
- His dam is a really nice, good uddered, easy fleshing Endurance daughter.



Lot 11

EA EASTONDALE PACIFIC 64'24 12

HOOVER NO DOUBT
STERLING PACIFIC 904
BALDRIDGE ISABEL B082

BAD LANDS INITIATIVE 375X
EASTONDALE MISS ESSENCE 144'14
EASTONDALE MISS ESSENCE 26'11

MOGCK BULLSEYE
MISS BLACKCAP ELLSTON J2
G A R PROPHET
BALDRIDGE ISABEL Y69

SANDY CREEK INITIATIVE 52T
BAD LANDS LADY 311N
KBJ ROGUE II 203H
DRYLAND MISS ESSENCE 101

REG# 2384336 / VK 64M / FEBRUARY 16 2024

Act BW	Adj 205	Adj 365	EPD BW	EPD WW	EPD YW	EPD Milk	EPD CE
90	729	1174	1.8	58	101	18	3.5

- Maternal brothers have sold to Brown Acres, Barry Daku and Lee Watson in past bull sales.
- This bull's dam has been a solid producer her whole life.



Lot 12



Lot 13

EA EASTONDALE ECHELON 114'24 13

EASTONDALE HIERARCHY 57'20
EASTONDALE ECHELON 155'22
EASTONDALE BLACKBIRD 85'12

CROWFOOT EQUATION 5793R
CIRCLE G BLACKBIRD 219K
CIRCLE G BLACKBIRD 706E

MERIT STING 7047E
EASTONDALE GAMMER 38'09
BAD LANDS INITIATIVE 375X
EASTONDALE BLACKBIRD 110'06
O C C LEGACY 839L
CROWFOOT FORKS 755K
SINCLAIR TIMELESS 8BA4
CIRCLE G BLACKBIRD 556C

REG# 2384368 / VK 114M / FEBRUARY 27 2024

Act BW	Adj 205	Adj 365	EPD BW	EPD WW	EPD YW	EPD Milk	EPD CE
74	659	1174	0.7	47	83	29	6

- Top quality heifer bull.
- Sired by a bull we sold to South Shadow Ranch.
- Dam was a female we purchased out of the Circle G dispersal.
- Excellent maternal pedigree.



Lot 14

EA EASTONDALE DROPTINE 10'24 14

SIX MILE DROPTINE 811G
VALLEY BLOSSOM DROPTINE 767K
VALLEY BLOSSOM LASS 13Y

MERIT STING 7047E
EASTONDALE HEROINE 77'19
EASTONDALE HEROINE 29'14

REMITALL F DIESEL 76D
EXAR BLACKBIRD 1916
HOLMAN COOL COUNTRY 845
JOINT CREEK 3R LAD 723T

BAR S RANGE BOSS 4002
MERIT SOCIALITE 5121C
SOO LINE KODIAK 1131
EASTONDALE HEROINE 30'08

REG# 2379929 / VK 10M / FEBRUARY 04 2024

Act BW	Adj 205	Adj 365	EPD BW	EPD WW	EPD YW	EPD Milk	EPD CE
83	597	1060	2.1	51	89	22	-1.5

- A bull with an appealing look, nice headed, and deep bodied in a moderate, easy fleshing package.
- Sired by the high selling bull in the 2023 Short Grass bull sale
- A maternal sister was the high selling bred heifer in the 2023 Masterpiece sale selling to Golden Oak Livestock.



Lot 15

EA EASTONDALE DROPTINE 138'24 15

SIX MILE DROPTINE 811G
VALLEY BLOSSOM DROPTINE 767K
VALLEY BLOSSOM LASS 13Y

CROWFOOT EQUATION 5793R
EASTONDALE MAGNOLIA 91'15
BAR-E-L MAGNOLIA 15T

REMITALL F DIESEL 76D
EXAR BLACKBIRD 1916
HOLMAN COOL COUNTRY 845
JOINT CREEK 3R LAD 723T

O C C LEGACY 839L
CROWFOOT FORKS 755K
S A V 004 DENSITY 4336
BAR-E-L MAGNOLIA 184R

REG# 2384377 / VK 138M / MARCH 07 2024

Act BW	Adj 205	Adj 365	EPD BW	EPD WW	EPD YW	EPD Milk	EPD CE
88	607	1092	2.9	52	90	31	0

- A young Droptine son with a ton of pedigree predictability.
- So many good cows in this bull's pedigree on both the top and bottom.



- Maternal sister sold for \$16,500 in December's Piece of the Program female sale to Brockhill Angus in Ontario.
- Maternal brother sold as a calving ease, highlight bull to Karl Johnson in the 2022 bull sale.
- Very structurally sound made bull.

Lot 16

- High quality heifer bull.
- Maternal brother was Eastondale Endurance who sold in the 2016 bull sale to Lorenz Angus of Innisfail, AB.
- Maternal sister was a sale feature last fall selling to Duralta Farms.
- Nice young bull prospect.



Lot 17

EA EASTONDALE DROPTINE 109'24 16

SIX MILE DROPTINE 811G
VALLEY BLOSSOM DROPTINE 767K
VALLEY BLOSSOM LASS 13Y

EASTONDALE REALLY WINDY 06'13
EASTONDALE BONNIE LADY 11'19
EASTONDALE BONNIE LADY 10'17

REMITALL F DIESEL 76D
EXAR BLACKBIRD 1916
HOLMAN COOL COUNTRY 845
JOINT CREEK 3R LAD 723T

V D A R REALLY WINDY 4097
EASTONDALE ANNIE K 60'11
HF REFLECTION 241C
EASTONDALE BONNIE LADY 113'10

REG# 2384361 / VKE 109M / FEBRUARY 26 2024

Act BW	Adj 205	Adj 365	EPD BW	EPD WW	EPD YW	EPD Milk	EPD CE
88	681	1189	1.4	58	101	25	5

EA EASTONDALE DROPTINE 158'24 17

SIX MILE DROPTINE 811G
VALLEY BLOSSOM DROPTINE 767K
VALLEY BLOSSOM LASS 13Y

SOO LINE KODIAK 1131
EASTONDALE DYNA LASS 140'13
EASTONDALE DYNA LASS 34'03

REMITALL F DIESEL 76D
EXAR BLACKBIRD 1916
HOLMAN COOL COUNTRY 845
JOINT CREEK 3R LAD 723T

HF KODIAK 5R
GEIS PRIDE 114'99 MAF
LEACHMAN RIGHT TIME
EASTONDALE DYNA LASS 8D

REG# 2384388 / VK 158M / MARCH 18 2024

Act BW	Adj 205	Adj 365	EPD BW	EPD WW	EPD YW	EPD Milk	EPD CE
83	710	1150	0.3	45	78	26	5

VK 34G, Dam to Lot 9



VKE 11G, Dam of Lot 16



VK 56K, Dam to Lot 11



VK 22Y, Dam of Lot 24,19, Granddam of Lot 37



VK 91C, Dam to Lot 15, Granddam to Lot 1



VK 77G, Dam to Lot 14



VK 40E, Dam to Lot 8,13



COLW 28C, Granddam to Lot 11

VK 38W, Granddam to Lot 8, 13



VK 144B, Dam to Lot 12



VK 97H
Maternal Brother to Lot 15
Sire of Lot 26

EA EASTONDALE DROPTINE 57'24 18

SIX MILE DROPTINE 811G
VALLEY BLOSSOM DROPTINE 767K
VALLEY BLOSSOM LASS 13Y

HR HAHN PRIME CUT 71F
HR HAHN LUCY 86H
ROYAL LUCY DRCC 8035U

REMITALL F DIESEL 76D
EXAR BLACKBIRD 1916
HOLMAN COOL COUNTRY 845
JOINT CREEK 3R LAD 723T

HA PRIME CUT 4493
PEDERSEN ANDEE 292B
ALBERDA TRAVELER 416
THOMAS LUCY 9160

REG# 2384326 / VK 57M / FEBRUARY 14 2024

Act BW	Adj 205	Adj 365	EPD BW	EPD WW	EPD YW	EPD Milk	EPD CE
80	665	1142	1.5	50	85	22	2

- Excellent heifer bull prospect.
- His dam has been a peach with an excellent disposition since we purchased her as a bred heifer from the Hahn's of Sherwood Park, AB.
- Maternal sister was popular in the female sale last December selling to the good people of Border Butte Angus.

EA EASTONDALE INTENSIFY 85'24 20

GDAR INSIGHT 7201
MERIT INTENT 37H
MERIT FLORA 6078D

B HILLS FRL DURATION 606
EASTONDALE LUCY 62'11
EASTONDALE LUCY 45'08

SITZ INSIGHT 4794
GDAR QUEEN CARY 3233
BAR S RANGE BOSS 4002
MERIT FLORA 4120

LEACHMAN RIGHT TIME
H A BELETTA 0219
DRYLAND MAX 533
EASTONDALE LUCY 50'05

REG# 2392455 / VK 85M / FEBRUARY 20 2024

Act BW	Adj 205	Adj 365	EPD BW	EPD WW	EPD YW	EPD Milk	EPD CE
93	752	1297	3.8	60	90	25	-1.5

EA EASTONDALE BIG INTENTION 33'24 19

GDAR INSIGHT 7201
MERIT INTENT 37H
MERIT FLORA 6078D

HF TIGER 5T
EASTONDALE FOREVER LADY 22'11
GDAR FOREVER LADY 9136

SITZ INSIGHT 4794
GDAR QUEEN CARY 3233
BAR S RANGE BOSS 4002
MERIT FLORA 4120

HF KODIAK 5R
HF ECHO 84R
G D A R ROYCE 131
G D A R FOREVER LADY 223

REG# 2392452 / VK 33M / FEBRUARY 10 2024

Act BW	Adj 205	Adj 365	EPD BW	EPD WW	EPD YW	EPD Milk	EPD CE
88	649	1076	3	56	93	26	3

- Really nice made ET calf out of our Forever Lady x Tiger donor dam.
- This may very well be the sleeper in the sale.

- A very good ET calf that carries a high-quality maternal pedigree.
- His dam is a beautiful Duration daughter that is still working for our good friends at Triple L Angus of Viscount, SK.



Let 20



Lot 21

EA EASTONDALE INTENTION 09'24 21

GDAR INSIGHT 7201
MERIT INTENT 37H
MERIT FLORA 6078D

SANKEYS LARAMIE 114
EASTONDALE PAULINE 109'15
EASTONDALE PAULINE 126'08

SITZ INSIGHT 4794
GDAR QUEEN CARY 3233
BAR S RANGE BOSS 4002
MERIT FLORA 4120

SANKEYS LAZER 609 OF 6N
LAFLINS GEORGINA OF 6N 614
DRYLAND MAX 533
EASTONDALE PAULINE 08'03

REG# 2383143 / VKE 9M / FEBRUARY 04 2024

Act BW	Adj 205	Adj 365	EPD BW	EPD WW	EPD YW	EPD Milk	EPD CE
88	712	1148	3	52	84	22	0

- Extremely good bull here out of one of our best cows and cow families.
- Brothers have sold to Robin Thompson and Ferch Farms in past sales.

EA BWB TREMENDOUS 402M 22

O C C TREMENDOUS 619T
BWB TREMENDOUS 216KÉ
MISS WIX 8225 OF MC CUMBERÉ

KOUPAL JUNEAU 797
ÉBWB B PRIDE 208K
B PRIDE 461 OF MC CUMBER

O C C EMBLAZON 854E
O C C DIXIE ERICA 960H
SINCLAIR EXTRA 4X13É
MISS WIX 5184 OF MC CUMBER

O C C JUNEAU 807JÉ
KOUPALS ELBA 187
SINCLAIR EXTRA 4X13É
B PRIDE 461 OF MC CUMBER

REG# 2366393 / BWB 402M / JANUARY 24 2024

Act BW	Adj 205	Adj 365	EPD BW	EPD WW	EPD YW	EPD Milk	EPD CE
77	697	1178	0.6	50	85	26	n/a

- Bought as a pair last spring.
- Heifer bull.
- Dam is a very nice, good uddered female.
- Extremely maternal pedigree.



Lot 23

EA EASTONDALE STING 50'24 23

BAR S RANGE BOSS 4002
MERIT STING 7047E
MERIT SOCIALITE 5121C

HF TIGER 5T
EASTONDALE FOREVER LADY 22'11
GDAR FOREVER LADY 9136

BAR S RANGE BOSS 1118
BAR S PRIDE 0073
EXAR ONE-IRON 3889B
MERIT SOCIALITE 1223

HF KODIAK 5R
HF ECHO 84R
G D A R ROYCE 131
G D A R FOREVER LADY 223

REG# 2392453 / VK 50M / FEBRUARY 14 2024

Act BW	Adj 205	Adj 365	EPD BW	EPD WW	EPD YW	EPD Milk	EPD CE
88	592	1037	2.2	49	91	20	5

- Another ET calf out of the Forever Lady x Tiger donor dam.
- A Full brother is working in the Benlock herd at Grandora, SK.
- Long bodied and smooth made.

EA EASTONDALE HIERARCHY 81'24 24

MERIT STING 7047E
EASTONDALE HIERARCHY 57'20
EASTONDALE GAMMER 38'09

COLEMAN CHARLO 0256
EASTONDALE CASSIE 29'15
EASTONDALE CASSIE 08'10

BAR S RANGE BOSS 4002
MERIT SOCIALITE 5121C
DRYLAND MAX 533
MINBURN GAMMER 35K

O C C PAXTON 730P
BOHI ABIGALE 6014
S A V 004 TRAVELER 5658
EASTONDALE CASSIE 131'08

REG# 2384346 / VK 81M / FEBRUARY 20 2024

Act BW	Adj 205	Adj 365	EPD BW	EPD WW	EPD YW	EPD Milk	EPD CE
82	706	1267	0.6	47	78	25	5

- Heifer bull.
- Long spined, smooth shouldered bull.
- Dam is a good uddered, good tempered Cassie female.

Customer Testimonial - Singbeil Angus

Singbeil Angus has bought bulls from Eastondale Angus since 2020. When buying online, we wanted good feet on them. Dale assured us that if they weren't to our liking, he would take them back. In the four years before we had to disperse our cows we bought a total of ten bulls and we never returned one.



Lot 29

EA EASTONDALE COALITION 107'24 29

U-2 COALITION 206C
U2 COALITION 343F
WIL-DORR 127X TIBBIE 29B

FRL ROGUE 15Y
EASTONDALE BURGESS 125'14
EASTONDALE BURGESS 08'12

HF SYNDICATE 213Z
U2 ERELITE 109Z
WIL-DORR 4336 28T DEN-ERIC 21Z
MVF TIBBIE 172X

KBJ ROGUE II 203H
FRL ELBA 548R
KA BLACK CEDAR 290
BREED CREEK BURGESS 736

REG# 2384363 / VK 107M / FEBRUARY 26 2024

Act BW	Adj 205	Adj 365	EPD BW	EPD WW	EPD YW	EPD Milk	EPD CE
86	726	1256	2.3	46	80	25	4

- An abundance of style and thickness in this good Coalition 343F son.
- His dam is a one of our best producing mature cows with extremely good udder quality.
- Four maternal brothers have sold in past sales, Thanks Swan Hills Ranch, Tim Winters, Cross X Ranch and Tom Harrison.

EA EASTONDALE COALITION 121'24 30

U-2 COALITION 206C
U2 COALITION 343F
WIL-DORR 127X TIBBIE 29B

EASTONDALE REALLY WINDY 06'13
EASTONDALE MAYFLOWER 145'15
EASTONDALE MAYFLOWER 159'14

HF SYNDICATE 213Z
U2 ERELITE 109Z
WIL-DORR 4336 28T DEN-ERIC 21Z
MVF TIBBIE 172X

V D A R REALLY WINDY 4097
EASTONDALE ANNIE K 60'11
BAD LANDS INITIATIVE 375X
EASTONDALE MAYFLOWER 132'11

REG# 2384370 / VK 121M / FEBRUARY 29 2024

Act BW	Adj 205	Adj 365	EPD BW	EPD WW	EPD YW	EPD Milk	EPD CE
87	691	1113	2.5	52	88	21	6

- Comes out of the Mayflower cow family who always does a good job here yet consistently flies under the radar.
- Five maternal brothers have sold in past bull sales. Thanks Wes Pranke, Cross X Ranch, Clayridge Stock Farm, Kathy Singbeil and Mack Clarke.





Lot 31

- This bull's granddam is still working here at the age of 14 and still looks good.
- This bull would be an excellent choice for heifer or cow pastures.

- Member of our Agribition pen of three bulls.
- Real nice weaning ratio of 105.
- Dam is a maternal sister to the Lot 7 bull.



Lot 32

EA EASTONDALE COALITION 70'24 31

U-2 COALITION 206C
U2 COALITION 343F
WIL-DORR 127X TIBBIE 29B

SANKEYS LARAMIE 114
EASTONDALE MISS ESSENCE 15'17
EASTONDALE MISS ESSENCE 26'11

HF SYNDICATE 213Z
U2 ERELITE 109Z
WIL-DORR 4336 28T DEN-ERIC 21Z
MV F TIBBIE 172X
SANKEYS LAZER 609 OF 6N
LAFLINS GEORGINA OF 6N 614
KBJ ROGUE II 203H
DRYLAND MISS ESSENCE 101

REG# 2384339 / VK 70M / FEBRUARY 17 2024

Act BW	Adj 205	Adj 365	EPD BW	EPD WW	EPD YW	EPD Milk	EPD CE
84	669	1123	2.1	39	69	23	4

EA EASTONDALE COALITION 99'24 32

U-2 COALITION 206C
U2 COALITION 343F
WIL-DORR 127X TIBBIE 29B

BEAR CREEK STONEY 55D
BLACK CREEK DUCHESS 036H
EASTONDALE DUCHESS 77'13

HF SYNDICATE 213Z
U2 ERELITE 109Z
WIL-DORR 4336 28T DEN-ERIC 21Z
MV F TIBBIE 172X
MERIT STONEY CREEK 4023
BEAR CREEK 310T ERICETTE 55Z
KA BLACK CEDAR 290
EASTONDALE DUCHESS 111'11

REG# 2384357 / VKE 99M / FEBRUARY 24 2024

Act BW	Adj 205	Adj 365	EPD BW	EPD WW	EPD YW	EPD Milk	EPD CE
93	723	1298	3.1	46	80	25	3

EA EASTONDALE COALITION 116'24 33

U-2 COALITION 206C
U2 COALITION 343F
WIL-DORR 127X TIBBIE 29B

EASTONDALE BREAK AWAY 32'07
EASTONDALE RUBY 05'11
WWED 8180 RUBY 80P

HF SYNDICATE 213Z
U2 ERELITE 109Z
WIL-DORR 4336 28T DEN-ERIC 21Z
MVF TIBBIE 172X

HYLINE RIGHT WAY 781
GDAR FOREVER LADY 9136
SITZ TRAVELER 8180
FCR RUBY 25K

REG# 2384369 / VK 116M / FEBRUARY 28 2024

Act BW	Adj 205	Adj 365	EPD BW	EPD WW	EPD YW	EPD Milk	EPD CE
88	643	1184	3.9	47	88	25	1

- Excellent Coalition 343F son that just looks better and better every day.
- His dam just calved again at the age of 14, still with a tight, small teated udder.



EA EASTONDALE MASSIVE 18'24 34

B.B.A.R HIGH BAR 512C
B.B.A.R XL MASSIVE 927G
B.B.A.R MISS MORRISON 1233

BORDER BUTTE FUNDAMENTAL 105B
EASTONDALE ANNIE K 49'20
EASTONDALE ANNIE K 29'08

B.B.A.R EUREKA 9867
B.B.A.R RUBY BELLE 1334
O C C GLORY 950G
B.B.A.R MISS MORRISON 7133

MUSGRAVE FOUNDATION
BORDER BUTTE EVE 60W
DRYLAND MAX 533
EASTONDALE ANNIE K 57'05

REG# 2379932 / VK 18M / FEBRUARY 06 2024

Act BW	Adj 205	Adj 365	EPD BW	EPD WW	EPD YW	EPD Milk	EPD CE
78	664	1091	0.8	36	67	20	5

- Excellent heifer bull choice.
- Small angus head with an extremely smooth shoulder.
- Extreme maternal pedigree.



Customer Testimonial - Chris MacPherson, Wapella, SK

We have used Eastondale bulls for a number of years, the quality of there bulls really speaks for themselves, with the sale happening during the middle of calving there were times we didn't have time to make it down to look at the bulls in person, but we were able to buy in confidence online knowing that any bull in the sale would be a great addition to our herd, and that any issue would be completely looked after. Though we have recently dispersed our herd I know if or when I return to the cow business I will be looking to Eastondale again for the future. Genetics that I would definitely want again to rebuild a herd from. Thank you Dale, Shelly, Erica and Nolan for your commitment to producing top quality breeding stock.





Lot 35

EA EASTONDALE MASSIVE 105'24 35

B.B.A.R HIGH BAR 512C
B.B.A.R XL MASSIVE 927G
B.B.A.R MISS MORRISON 1233

B.B.A.R EUREKA 9867
B.B.A.R RUBY BELLE 1334
O C C GLORY 950G
B.B.A.R MISS MORRISON 7133

SCHIEFELBEIN ATTRACTIVE 4565
EASTONDALE FOREVER LADY 133'21
EASTONDALE FOREVER LADY 22'11

JMB TRACTION 292
FROSTY ANSWER 3979
HF TIGER 5T
GDAR FOREVER LADY 9136

REG# 2384360 / VK 105M / FEBRUARY 25 2024

Act BW	Adj 205	Adj 365	EPD BW	EPD WW	EPD YW	EPD Milk	EPD CE
96	781	1159	3.7	53	100	23	0

- New genetics for our long time loyal customers.
- Note the 780lb adj weaning weight, off grass, no creep.



Lot 36

EA EASTONDALE MASSIVE 111'24 36

B.B.A.R HIGH BAR 512C
B.B.A.R XL MASSIVE 927G
B.B.A.R MISS MORRISON 1233

B.B.A.R EUREKA 9867
B.B.A.R RUBY BELLE 1334
O C C GLORY 950G
B.B.A.R MISS MORRISON 7133

KG JUSTIFIED 3023
EASTONDALE FOREVER LADY 28'21
EASTONDALE FOREVER LADY 139'19

CONNEALY JUDGMENT
KG MISS MAGIC 1443
MINBURN ACTIVE DUTY 72C
EASTONDALE FOREVER LADY 29'12

REG# 2384365 / VKE 111M / FEBRUARY 27 2024

Act BW	Adj 205	Adj 365	EPD BW	EPD WW	EPD YW	EPD Milk	EPD CE
89	699	1149	2	42	77	20	1

- This bull is easily found in the pen, so correct in his makeup.
- His dam is a beautiful made, easy fleshing young female.
- Sleeper alert here!



Dam of Lot 36

EA EASTONDALE MASSIVE 122'24 37

B.B.A.R HIGH BAR 512C
B.B.A.R XL MASSIVE 927G
B.B.A.R MISS MORRISON 1233

B.B.A.R EUREKA 9867
B.B.A.R RUBY BELLE 1334
O C C GLORY 950G
B.B.A.R MISS MORRISON 7133

U2 TEMPTATION 180E
EASTONDALE TOPSY 42'21
EASTONDALE TOPSY 38'12

HF SYNDICATE 213Z
U2 ERELITE 109Z
KA BLACK CEDAR 290
EASTONDALE TOPSY 33'03

REG# 2384371 / VK 122M / MARCH 01 2024

Act BW	Adj 205	Adj 365	EPD BW	EPD WW	EPD YW	EPD Milk	EPD CE
88	714	1209	3.6	45	81	23	-2

- Maternal brother was a sale feature in last years bull sale, selling to Fred & Violet Lansdell of Leross.
- The Topsy cow family is noted for its longevity here.

VK 19U, Dam to Lot 28



VK 26Y
Granddam to Lot 32



VK 125B, Dam to Lot 30



IMP 9136J, Granddam to Lot 19, 24



VK 62Y, Dam to Lot 20



VKE 109C, Dam to Lot 21



HRH 86H, Dam to Lot 18



VK 29C, Dam to Lot 25



VK 8X, Granddam to Lot 25



VK 159B, Granddam to Lot 31



VKE 77A, Granddam to Lot 33



VK 5Y, Dam to Lot 34



VK 131U, Granddam to Lot 25



VK 63C, Maternal Brother to Lot 28



VKE 95Z, Granddam to Lot 29



CASTLEROCK MARKETING
Box 415, Swift Current, SK S9H 3V8

